

FULL TIME COURSE GUIDE

2019/20



A Study Programme
to meet your needs
and ambitions

| | |
|--------------------------------------------------|-----------|
| Principal's Welcome..... | 03 |
| Mission Statement | 04 |
| Why Choose BSix?..... | 05 |
| Your Study Programme | 06 |
| Tutorial..... | 09 |
| Careers..... | 10 |
| Work-related Learning..... | 12 |
| Hackney University Extension (HUE)..... | 13 |
| Enrichment | 14 |
| Student Voice..... | 16 |
| Supporting You..... | 17 |
| Our Facilities..... | 19 |
| Choosing the Right Course..... | 20 |
| Entry Criteria..... | 21 |
| Which is the Right Study Programme for you?..... | 22 |
| Entry Level Vocational Courses | 24 |
| Level 1 Vocational Courses..... | 26 |
| Level 2 Vocational Courses..... | 32 |
| GCSE Course Options..... | 44 |
| Level 3 Vocational Courses..... | 50 |
| A-level Course Options | 58 |
| Level 4 Vocational Courses..... | 72 |
| How to Apply..... | 74 |
| How to Find us..... | 77 |
| Index..... | 78 |
| Open Events..... | 80 |

PRINCIPAL'S WELCOME

Thank you for reading our prospectus. Hopefully, it will give you some idea of life at the College and illustrate why it is an exciting and supportive place to study.

Clearly I am not a completely impartial observer, but, since taking over as Principal here in May 2018, I have become more and more aware of the many positive features BSix has to offer. In no particular order of importance, I would recommend to you:

- A consistently strong standard of teaching and learning provided by conscientious and deeply committed staff.
- Excellent support and guidance systems, designed to help students cope with any particular problems they might be facing.
- A broad range of interesting and useful enrichment activities which complement the main course of study and allow students to gain additional skills and qualifications.
- Thorough and comprehensive preparation for students' next steps, whether they be in further education, higher education or the world of work.
- Opportunities to continue to develop greater skill and confidence in the speaking and writing of English and the use of Mathematics.

All this in a safe, purposeful and friendly atmosphere responsive to the ideas and opinions of its students.

Don't take my word for what BSix has to offer. Come and visit and, if you like what you see, enrol as a student. Join those of us who are here already in our united efforts constantly to improve all that we do as a college.

Kevin Watson
Principal



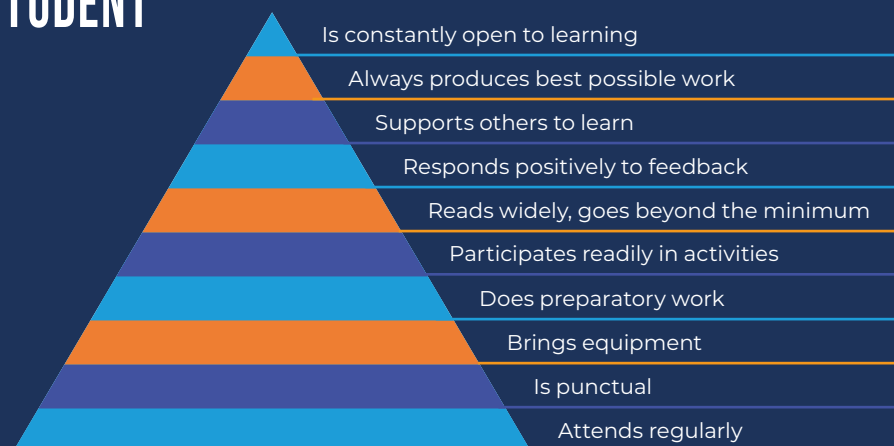
MISSION STATEMENT

The mission of BSix is to develop in its students, and to demonstrate through its staff, the characteristic of being always “open to learning”.

It seeks to achieve this by means of a carefully tailored and suitably challenging individual programme, underpinned by consistently strong teaching, comprehensive support services and a wide range of enrichment opportunities, set within a safe and inclusive learning environment.

Promotion of an openness to learning is at the heart of the College ethos and is a key factor in students acquiring the qualifications, and developing the skills and personal qualities, essential for their continuing success.

THE EXPERT STAFF MEMBER... THE EXPERT STUDENT



WHY CHOOSE BSIX?

BSix offers a uniquely flexible approach to your Study Programme. Our aim is to make sure that what you study at BSix will be enjoyable, exciting and will be inextricably linked with careers and your future ambitions.

How are we different to other colleges?

We plan each aspect of the study programme to make sure that it is flexible so that we can adapt it to your needs. For example, you might choose to do a mixed package of A-levels and BTEC certificate qualifications at Level 3.

We are also one of the few colleges in London to offer a programme of GCSE re-sits. For most students studying at Level 2, a vocational course is the best option, not least because of the assessment process which is not primarily exam-based. However, for students with particular needs and aspirations it might be sensible to take GCSEs again. These needs and aspirations may be one of the following:

- A desire to not yet commit to any one vocational area.
- Determination to progress to A-levels as the best path to a given career.
- A period of illness or personal difficulties which led to under achievement at school.
- Having not had the opportunity to sit GCSE exams yet (e.g. overseas students).

Our GCSE programme is an intensive one-year course and the subject choice is broad, spanning Humanities, STEM and Creative areas. We also offer Entry to Level 2 Vocational courses with carefully planned and exciting progression routes.

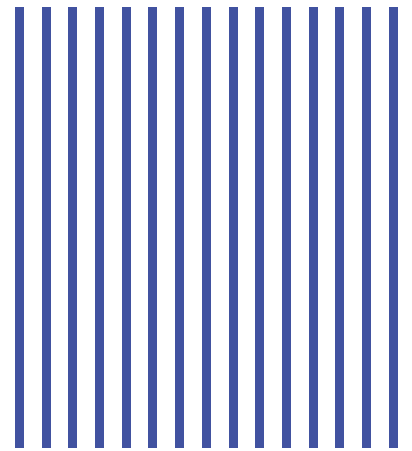
We are also distinctive in our catchment area. Students currently on roll at BSix are alumni of 190 different schools, and this does not include those who are new to the country from overseas! Students travel to BSix from further afield because of the flexibility of the study programmes we offer. The additional benefit to you of this fact is that you meet many new friends and learn much about different backgrounds and cultures. It represents a unique part of your learning journey with us which will better prepare you for your life and career beyond BSix.



YOUR STUDY PROGRAMME

All students are enrolled on to an individually tailored study programme.

The aim of the study programme is to equip you with the necessary skills to progress on to a further course of study, a university degree, an apprenticeship and ultimately into employment. Every study programme consists of the below.



CORE
PROGRAMME

ENGLISH
AND MATHS

TUTORIAL

WORK-RELATED
LEARNING

ENRICHMENT





TUTORIAL

The Tutorial is the core of every student's Study Programme.

Your personal Tutor will be the custodian of your study programme, helping to make sure that you are enrolled on to the best possible combination of courses to meet your needs and help you to achieve your progression ambitions. Your Tutor will be your advocate throughout the year, someone who knows how you are doing on each aspect of your study programme and who is aware of any issues that you may face. Your Tutor is the person you must keep in touch with if for any reason you are not able to attend college. Your Tutor will keep in touch with you and your family.

The Tutorial programme consists of two tutorial sessions each week.

One will be for your whole group and will cover various interesting topics for you to discuss such as:

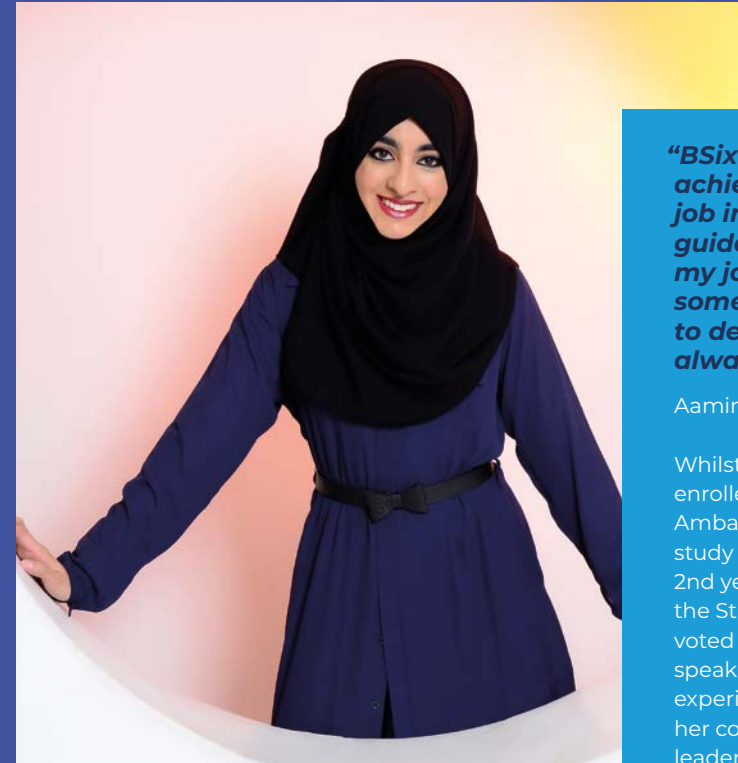
- Diversity: Identity, faith and belonging
- Internet safety
- The environment
- Dealing with stress
- Progression options.

There will also be a linked programme of Assemblies and speakers. The second session each week will be set aside for 1-to-1 progress meetings.

CAREERS

“Good career guidance helps inspire students towards further study and enables them to make informed decisions whenever choices are open to them. It helps them to understand enough about the world of work to know what skills and qualifications they need to succeed. It is critical for social mobility because it helps open students’ eyes to careers they may not have considered.”

Sir John Holman



“BSix is how I have achieved my dream job in nursing. They guided me every step of my journey to become someone who aspires to develop herself and always aim high.”

Aaminah Dawood

Whilst at BSix, Aaminah enrolled as a Student Ambassador as part of her study programme. In her 2nd year she campaigned for the Student Union and was voted in as Vice President. She speaks of the value of these experiences in developing her confidence, skills and leadership qualities; which in turn have helped her to succeed at university and now in her career.

STUDENT PROFILE

Careers education at BSix is embedded into every student’s study programme (linking with Gatsby benchmarks):

- Group work sessions are planned as part of the programme of Tutorial activities.
- BSix is a member of the Careers Collaborative and the Hackney Careers Cluster programme enabling us to keep up to date with the latest career and labour market information.
- Every student receives a 1-to-1 careers interview to ensure their individual needs are met.
- Teachers and tutors link the curriculum to careers at every opportunity.
- Professionals from industry are invited to talk to students at careers carousel events.
- All students undertake a substantial work-related learning aspect to their study programme including work-place visits and work placements.
- Progression is an integral part of the College’s mission to equip young people with the necessary skills to progress on to university, apprenticeship and employment.
- Students have multiple opportunities to engage with universities and apprenticeship providers through partnership programmes and the annual Progression fair.



WORK-RELATED LEARNING

BSix aims to help its students gain the skills they need to be successful in the world of work.

The College runs a year-long programme of work-related-learning events, helps students find a variety of work placements, and engages with London businesses and enterprise charities and organisations. The work placements and work-related-learning activities are devised in collaboration with Inspire! the Education and Business Enterprise organisation for Hackney, a key partner of BSix.

All students have work placements as part of your study programme during your BSix student journey, but not necessarily every year. Some courses have extended industry work placements as a compulsory part of the course e.g. Childcare and Healthcare. We are now also working with Erasmus who provide overseas work placement opportunities.

Relevant high quality work-related activities are built into the course plan for students not going out on work placement – this might take the form of careers carousels, careers days or work place visits.

HACKNEY UNIVERSITY EXTENSION (HUE)

What is HUE?

Hackney University Extension is run by BSix College collaborating with the Hackney Learning Trust and local schools, we bring young people in Hackney together with leading universities to provide short university-style programmes, as well as a range of opportunities, including residential Easter and summer schools at Manchester, Cambridge and Oxford Universities. The Extension programmes are split into an Autumn Term and a Spring Term, and students can take part in a programme in one or both terms. The courses are run by leading universities, including the University of Oxford, the University of Cambridge, University of York and Queen Mary's, University of London. You will have the opportunity to work with lecturers and current students from these prestigious institutions.

Over the next year you will be making important decisions that will have a significant impact upon your future. Hackney University Extension aims to give you an insight into the world of higher education, to expose you to the rigours of university study, and to aid and strengthen your university application.

Our programmes for 2019/20 are:

- Clare College, University of Cambridge (Maths)
- Pembroke College, University of Oxford (Humanities)
- University of York (Sociology)
- University of York (Biology)
- Queen Mary's University of London (Politics)
- King's College London (English Literature)
- University of East Anglia (American History)





ENRICHMENT

The BSeven department at BSix organises the enrichment clubs and activities.

These provide an extra dimension to your study programme and aim to increase your skills, confidence and enjoyment whilst at college. There are four different pathways to choose from, these are:

Student Leadership Pathway

- Student Ambassador Programme
- Student Union
- BCitizens
- Class Representatives
- Peer Coaching Programme

You will have the opportunity to gain leadership training and qualifications through working with our partner organisations: Citizens UK, Team-Up and Money A&E.

Creative Pathway

- Dance Company
- Hackney Shed Theatre – Young Company
- Music Performance
- Music – Making Beats and Recording

Sports Pathway

- Coaching qualifications including:
 - Tennis
 - Badminton
 - Basketball
 - Community Sports Leaders Award
 - Netball
 - Futsal
 - Handball
 - Volleyball
- Duke of Edinburgh Awards
- Jack Petchey Awards
- Sports for fitness and well-being including:
 - Yoga
 - Zumba
 - Table-tennis
 - Taekwondo
 - Boxing
 - Legs-bums & tums
 - Touch rugby
 - Cricket
 - Football
 - Abs core
 - Step
 - HIIT

Knowledge is power series

Free from the pressures of examination, we offer a series of events, short courses and workshops to debate some of the major problems facing society and young people today.

| Subject | Title |
|----------------------------------|-----------------------------------------------------------------------------------|
| Business and Economics | Understanding Finance Capitalism |
| English | Black Women Writers' Group Race, Gender and Class in the History of Literature |
| Film and Media | Race, Power and the Media |
| Geography | Migration, Race and Crime |
| History | A History of South Asians in Britain |
| Politics | Britain, Borders and Brexit |
| Music | Black British Music in Hackney |
| Psychology | Relationships, Race, Gender and Sexuality |
| Sociology | Introduction to Black Studies |
| Youth workshop | Developing Youth Led Solutions to Youth Violence |
| Women's Empowerment with Spectra | Powering our Future #3 – UCAS support for personal statements and subject choices |

STUDENT VOICE

BSix encourages its students to play a full part in the running of the College.

Getting involved in the student voice is a fantastic way to boost your skills for life at BSix and beyond. Stand out from the crowd with universities and employers by showing you are an active member of your community who goes the extra mile.

The student voice programme encourages participation both in the College and in the wider community. Students undergo professional leadership training and meet regularly to assist each other with their roles.

Our students will tell you that the College always listens and will do its utmost to respond to constructive and appropriate suggestions. Ofsted has called our approach “innovative” and “highly responsive”.

There are four key strands to the Student Voice, these are:

- Class Representatives
- Student Union
- Student Ambassadors
- BCitizens



SUPPORTING YOU

Our Student Services department aims to ensure that all students have access to support when needed to help you to reach your potential.

The department supports young people with a wide variety of needs including Special Educational Needs, mental health and emotional well-being difficulties, Looked After Children, social and behavioural difficulties, bursary, welfare and attendance issues.

BSix is fully accessible with lift access in each block. The College has a mobile hoist and track hoist, and a room suitable for physiotherapy and stretching.

Communication and engagement of parents of young people requiring support is important to the Department and is facilitated by regular Parent Forums and events for information sharing and collaboration with external agencies.

Find out more about a course: www.bsix.ac.uk



OUR FACILITIES

BSix is a modern sixth form college located in the heart of the East End of London.

Our facilities reflect that we are surrounded by the creativity of Hackney, close to the Tech Hub of Shoreditch and near to the financial district in the City of London.

The College is currently investing in improving and updating our facilities. We currently have a large number of IT and Mac teaching rooms, a large and well-resourced Library, a group study facility for students and a brand-new English and Maths study centre. We have specialist science laboratories, a recording studio, a large art workshop and a photography studio. The College also has a large lecture and performance theatre and a history themed garden.

Investing in the future

The Class of 2019 will benefit from an improved Learning Resource Centre, outdoors sports pitch and Student Services suite at the front of the College.



CHOOSING THE RIGHT COURSE



To study with us we must receive satisfactory references and you must demonstrate commitment and the potential to succeed.

Course Fees

If you are aged between 16 to 18, tuition is free. We have a limited number of 'free' funded places for 19-year olds. Please contact Admissions for further advice: **0800 3892 947** or **info@bsix.ac.uk**

Alternative Provision

All Entry and Level 1 course options are available for 14–16-year-old students who have been accepted for an alternative educational pathway by the education department in the borough in which they live. We are currently able to accept students referred from Hackney, Haringey, Islington, Camden, Enfield and Waltham Forest. Please contact your borough for further details.

Overseas Students

We have many 16 – 18-year-old students studying with us who are from overseas but now resident in the UK. We can enrol you ONLY if you have eligibility to study in the UK; for example, if you have an EEA passport or if you have a visa which gives you suitable entitlement. We assess all cases on an individual basis, if you are unsure of your eligibility/entitlement status, please contact our Admissions team on **0800 3892 947** or email **info@bsix.ac.uk** we cannot accept students who are on student visas.

English and Mathematics

We are committed to making sure that you have the best qualifications possible in English and Mathematics. Employers, universities and other courses in the College will expect you to have reached a suitable standard in these subjects. All students in the College who do not have a GCSE pass at grade 4 (C) or above in Mathematics or English Language will be expected to study towards this level during their time at college.

ENTRY CRITERIA

We have listed a range of courses with relevant entry criteria to help you choose the right level and type of qualification for you. Certain subjects may require specific grades at GCSE, these are listed on the individual course information pages.

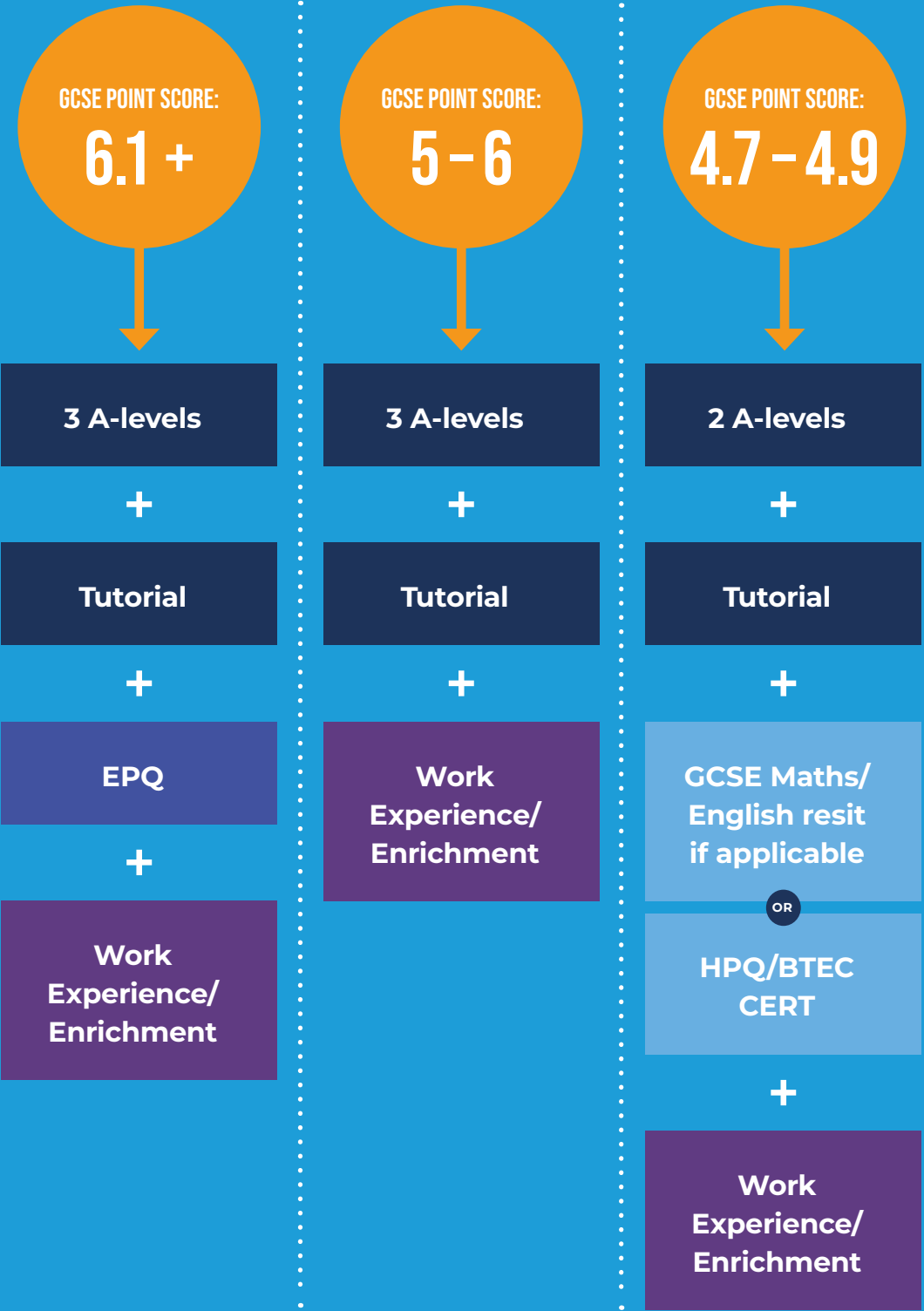
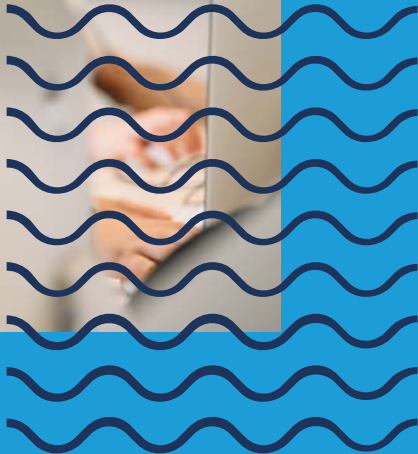
| Level | Entry Requirements | Progression |
|-------------------------------------------------------------------------------------------|-----------------------------------------------------------------------------------------------------------------------------------------------------------------------------------------------------------------------------------------------------------|----------------------------------------------------------------------------|
| Entry Level / ESOL (page 24) One-year course | No qualifications required – suitable for students who achieved below grade 2 (E) at GCSE | Higher-level course having acquired sufficient skills in English and Maths |
| Level 1 (page 26) One-year foundation course | Grade 2s (E) at GCSE | Level 2 study |
| Level 2 (page 32) One-year course which gives you a broad understanding of the subject | At least four Grade 3s (D) at GCSE | Level 3 study |
| GCSE (page 44) One-year intensive course | Four or more Grade 3 (D) results at GCSE previously. If you have not had the opportunity to study GCSEs before but feel this is an appropriate course for you, you will be asked to complete a written assessment to check suitability | A-levels or Level 3 Vocational Programme |
| Level 3 (page 50) Two-year course, equivalent to three A-levels | At least four Grade 4s (C) at GCSE | University, employment or an apprenticeship |
| A-level (page 58) Two-year course with exams at the end of second year | At least five Grade 4s (C) at GCSE. This must include English Language at a Grade 5 or higher for all A-level study programmes and a Grade 5 or higher in Maths for Maths and Science subjects. Some A-levels require specific grades in certain subjects | University, employment or an apprenticeship |

WHICH IS THE RIGHT STUDY PROGRAMME FOR YOU?

We will guide you on to a study programme based on your GCSE point score.

This is calculated by adding together the points from your English and Maths (double weighted) and your 4 other highest GCSE grades. The total is then divided by 8 to give you your individual point score. Based on this, along with discussion on subject interests and career progression aims, determines which study programme is right for you.

This diagram shows the recommended pathways for Study Programmes at Level 3.



ENTRY LEVEL VOCATIONAL COURSES

For students with no or few formal qualifications.



1 YEAR



2 COURSES

These courses will allow you to progress to Level 1 study in the vocational area of your choice. All courses have a strong emphasis on English and Maths skills as well as work related learning. You will develop your communication and employability skills within the tutorial and enrichment activities in your study programme. You will be assessed through coursework.

Entry Level: Work Skills

No formal qualifications required. This course is specifically accessible for students with SEND support needs that can be evidenced with an EHCP or for students who have not been regularly able to access education.

This course combines a range of units that develop teamwork, volunteering, personal and employability skills through practical and academic tasks. You will be assessed through coursework.

Areas of Study

- Work Skills in teamwork, volunteering and CV writing
- Home cooking skills
- Pathway vocational studies in one of the following:
 - Business
 - Health Social and Childcare
 - Media
 - Travel and Tourism
 - Science
- Duke of Edinburgh Award Scheme

Progression pathway

Your planned progression pathway would be to a Level 1 course at BSix or an external supported internship.

Entry Level: ESOL

Your English language skills are assessed at interview and enrolment to evaluate which group you will start your BSix journey in.

The course is designed to enable students the opportunity to achieve more than one level. Students make exceptional progress. Beginners focus on English and Maths. Intermediate and more advanced learners will also study vocational studies in one of the following:

- Business
- Health, Social and Childcare
- Media
- Travel and Tourism
- Science

There are three exams periods through the year. Students are assessed from Entry 1 – Level 2. All ESOL courses offer a range of cultural and work-related experiences that support personal and academic development. The most advanced students will also be enrolled to the Duke of Edinburgh award scheme.

Progression pathway

Students can progress to further ESOL levels of study, Level 1 or 2 vocational courses or a full GCSE programme dependent on their individual achievements.

LEVEL 1 VOCATIONAL COURSES



1 YEAR



5 COURSES

For students working at Entry 3 Level in English and Maths. Students will be predicted or have already achieved mostly Grade 2s in their GCSEs.

These courses will allow you to progress to Level 2 study in the vocational area of your choice. All courses have work related learning to allow you to discover insight to working in the sector you are studying. You will also study English and Maths at functional skills Level 1. You will develop your communication and employability skills within the tutorial and enrichment activities in your study programme. You will be assessed through coursework.

Progression pathway

The natural progression is to a Level 2 vocational course and GCSE English and Maths.



Find out more about a course: www.bsix.ac.uk

Business & Enterprise

This course introduces you to the world of business and finance and develops practical entrepreneurial skills. You will study a range of BTEC business units and have the practical experience of running your own business as a team by being part of our Young Enterprise Company Programme.

Over the course of the year students create and run real profit-generating businesses under the guidance of an expert business volunteer. BSix students have been mentored by experts at Citi Bank, attending regular meetings at the Canary Wharf London Head Office! This is an ideal course to take your first steps in a business career. The ability to work independently, as well as part of a team, is crucial to being successful in the business world today.

Creative Media

The qualification will provide a strong base of skills, enhance self-confidence and develop an understanding of the career demands and opportunities within art, design and media.

This course introduces you to the research, contextual and practical skills required to further study and work in the creative sector. Project work will cover visual arts, 2D and 3D media using industry standard techniques. Your Final Major Project will be informed by the skills you have developed over the year and will be displayed at the College's annual art, media and music exhibition 'Roots Festival'.

The creative sector is constantly growing and evolving. Government figures show that 12% of London's jobs are in the creative sector.

Functional Skills English & Maths

You will have three opportunities to pass exams during the year. Whatever your starting point you can be assessed from Entry Levels up to Level 2 in both subjects. These courses are a vital part of your study programme and will form part of the entry criteria for progression to the next level of vocational study.



Health, Social & Childcare

Combining the three areas of the care industry allows you to study a range of topics. This also provides you with knowledge and experience to progress on to and specialise in one of these areas at Level 2. Additionally, you will study a paediatric first aid course that allows access to employment in nurseries. You will also visit local nurseries to experience their work environment.

The care sector is one of the biggest industries worldwide with the NHS alone employing 1.7 million people in the UK. This course combines three areas of the sector to help you to choose your career path.

Travel & Tourism

This course introduces you to the world of Travel and Tourism. The industry is the UK's third largest employer, accounting for 9.5% of total employment. The subject also has a range of transferable skills that can be used in other career sectors from marketing and events to public services and business. There will be a variety of educational visits to enhance your learning and skills as part of this new course.



BSix is known for its flexible approach to individual study programmes no matter what level of study you are engaged with. The following options are available to students enrolled on to an Entry or Level 1 course. These are designed to enhance your learning and increase your skills, confidence and enjoyment; all of which will make you a stronger candidate for future employment.

Foundation Project

The Level 1 Foundation Project will develop and extend from one or more of your study areas and/or from an area of personal interest or activity outside your main programme of study. This additional qualification will stretch and challenge your research skills and creativity.

Duke of Edinburgh Award Scheme

This award has inspired and transformed the lives of millions of young people from all walks of life. From volunteering to physical activities, life skills to expeditions, achieving a DoFE Award is a passport to a brighter future, valued by employers and universities.

The NCS Challenge

A once-in-a-lifetime opportunity for 15–17 year old students. The National Citizen Service helps build skills for work and life whilst taking on new challenges and meeting new friends.

What's involved?

- A stay at an outdoor activity centre
- The opportunity to gain new skills
- A way to meet new people and life-long friends
- The chance to plan and run a project

Language qualifications

No matter what level you are studying at, if you are a native speaker in languages other than English, you may choose to add a language qualification to your study programme. This is an excellent way to boost your grades, career prospects and employability. This might be a GCSE or an A-level. The addition of languages will help you to better position yourself in our global society.



LEVEL 2 VOCATIONAL COURSES



1 YEAR



15 COURSES

Students will be predicted to achieve, or have already achieved, four or more Grade 3s in their GCSEs.

These courses will allow you to progress to Level 3 study in the vocational area of your choice. All courses have work related learning to allow you to discover insight to working in the sector you are studying. You will also study English and Maths at GCSE if you have not already achieved these. You will develop your communication and employability skills within the tutorial and enrichment activities in your study programme. You will be assessed through coursework as well as exams in certain subjects.

Progression pathway

The natural progression is to a Level 3 vocational course in the subject you studied at Level 2 or a related field of study.



Find out more about a course: www.bsix.ac.uk



Art & Design

Level 2 Diploma University of the Arts London (UAL)

This course will introduce you to core Art & Design skills and techniques such as drawing, painting, photography and sculpture. You will develop skills in 2D and 3D Art topics which will provide you with the underpinning knowledge and skill set to progress on to Level 3. The method of assessment is 100% coursework.

The Creative Industries employment sector in London has followed a consistent pattern of growth over the past 20 years and continues to do so. This course will provide you with work-related learning opportunities to enhance your future job prospects. Your course will be enhanced by educational trips to the creative hubs in the immediate area and you will contribute work to the College's annual Arts exhibition 'Roots Festival'.

Specific subject entry criteria:

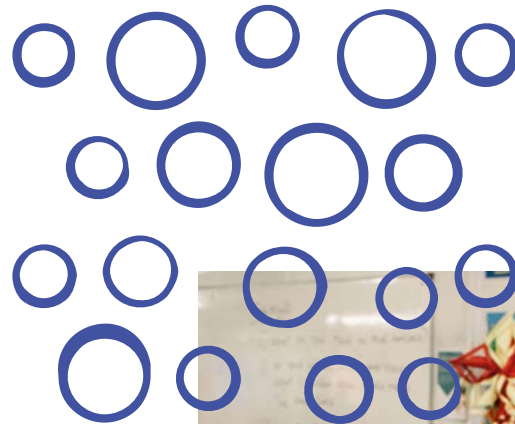
You need to have either a GCSE Art & Design (or related art subject) or a portfolio of art work.

Business

BTEC Level 2 First Extended Certificate

This exciting course offers you the opportunity to develop the knowledge and practical skills needed for future work in business and industry. The course will help you to develop essential skills for the world of business such as communication, numeracy, customer service, teamwork and IT skills. The course is enriched by exciting activities such as a study trip to a Premier League football club and to a major banking or accounting firm, trips to local businesses for market research and visits by guest speakers from the business sector.

There is a wide range of professions where Business Studies will be beneficial including banking, management, e-business, finance and accounting, human resources, marketing and retail. In London, opportunities for employment are abundant in the retail industry, in manufacturing and in the many other service sectors such as the civil service and the charity sector. You may also consider self-employment and teaching.



Childcare

Level 2 CACHE Award in Development and Care

This qualification provides students the opportunity to gain a vocational qualification that gives a basic introduction to the early year's sector. The course teaches students the knowledge and understanding of child development and well-being necessary for working with children in a variety of settings. The Award is aimed at a range of students who wish to be introduced to childcare and development for children aged 0-5 years and it gives students an insight into their preferred learning styles, developing their ability to study.

You would study this course alongside the Certificate Introducing Caring for Children and Young People.

Childcare

CACHE Level 2 Certificate Introducing Caring for Children and Young People

The Level 2 Certificate in Introducing Caring for Children and Young People will give students a good understanding of childcare and education, parenting and babysitting. It will also help them to make an informed choice about working with children and young people.

Students will learn how to care for children when babysitting in a home environment. It includes a babysitter's responsibilities to the children they are looking after, their responsibilities to the parent(s), and accident prevention and fire safety. This qualification also introduces students to the responsibilities of being a parent. It covers the welfare and care of babies and young children, the importance of a healthy lifestyle and how to access different types of support for new parents. Assessment is both exam and coursework based.



Childcare

NCFE CACHE Level 2 Award in Support Work in Schools and Colleges for Schools

This qualification is an introduction to the knowledge and understanding needed to work in a school or college environment. It can apply to the many varied roles that full and part-time support staff may fulfil including: administrative roles, site support roles, technical roles and volunteers, as well as roles that work directly with children and young people in the learning environment.

The qualification is aimed at a range of students, including students with special educational needs or where English is an additional language, who are thinking of working in a school or college setting. The units are assignment based and grades are pass or fail.

The course has been designed to support you to progress on to Level 3 qualifications across several different sectors, including Early Years Educator, Supporting Teaching and Learning and the Children and Young People sector. It also contains significant transferable knowledge for Health and Social Care study.

Health & Social Care

BTEC Level 2 First Extended Certificate

The BTEC Level 2 First Extended Certificate in Health & Social Care focuses on developing practical work-related skills for a future career in a Health & Social Care setting. You will do this by visiting and hearing from professionals and completing projects on realistic work place scenarios. You will gain specific knowledge and skills that learners need to work successfully in the care industry, including visiting experts providing workshops on identifying skills, CV writing and interview techniques. The course covers all aspects of Health & Social Care and provides opportunities for learners to develop

Childcare

NCFE Level 2 Certificate in Understanding Children and Young People's Mental Health

The purpose of this qualification is to increase students' knowledge and awareness of children and young people's mental health. By completing the qualification, students will develop knowledge of:

- children and young people's mental health in context
- mental health problems commonly associated with children and young people
- the impact of mental ill-health on children and young people
- support available to maintain mental wellbeing in children and young people.

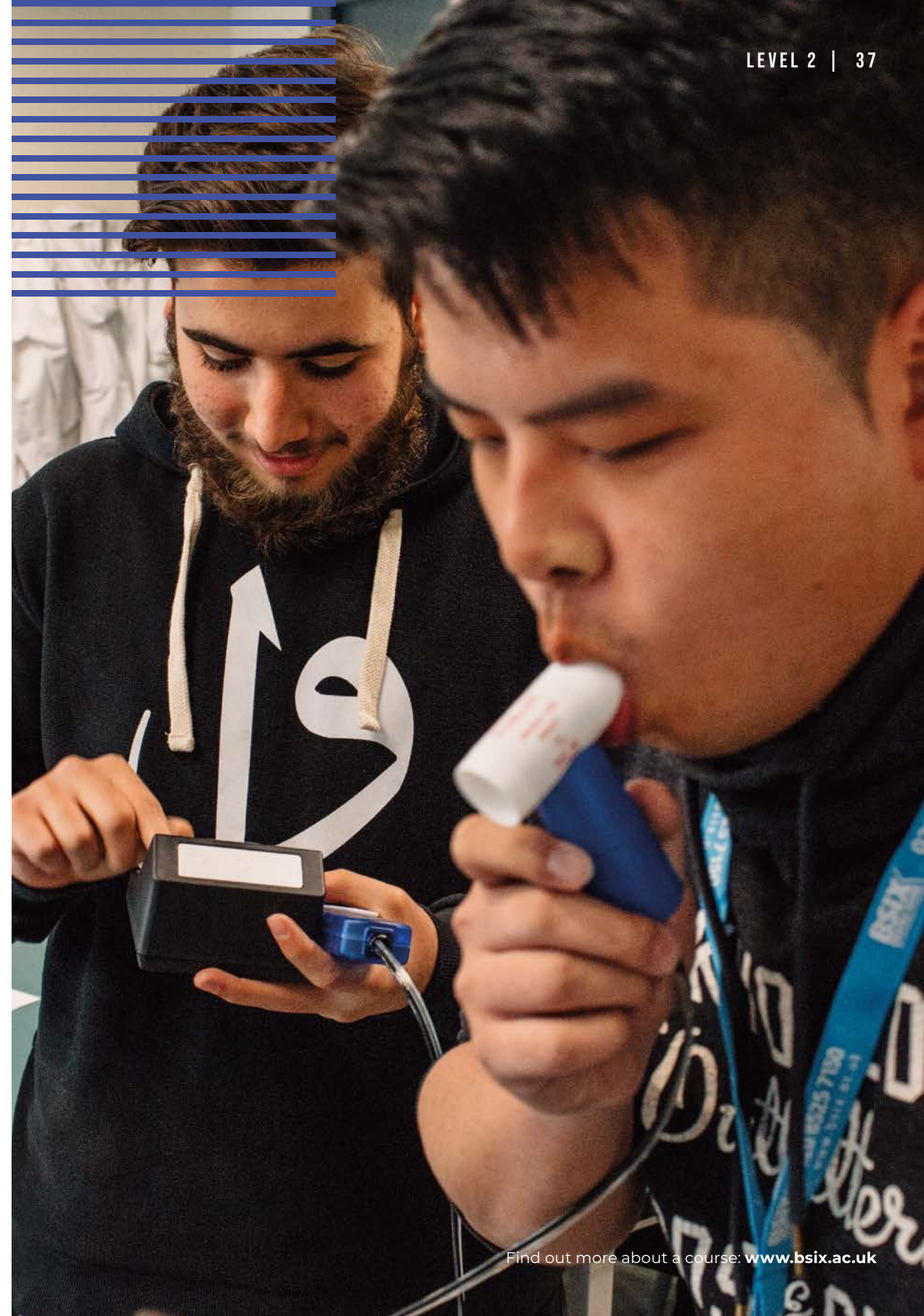
The units are assignment based and grades are pass or fail. Once achieved, students can progress to Level 3 vocational courses across several different sectors in childcare or health and social care.

key skills, such as improving own learning and performance and working with others.

There is continuous assessment through written assignments and practical activities. There are also two external examinations which you need to pass to complete the course.

Successful completion of the course can lead on to BTEC Level 3 Health & Social Care.

The Health Care sector provides 1.7 million jobs in the UK alone. Popular careers are in the fields of nursing and social work.





ICT

BTEC Level 2 First Extended Certificate in Information and Creative Technology

This exciting qualification introduces creative and innovative features and is designed to provide specialist work-related skills in IT. We will give you the opportunity to gain a broad understanding, knowledge and skills in the Information Technology sector as well as some aspects of the creative industries, such as computer games development.

Most students progress to Level 3 study at BSix. The skills you develop on this study programme are highly valued by employers. There are a wide range of career opportunities available to you on completion including communications, administration, software and hardware development.

As well as lectures and practical workshops, you will undertake a variety of tasks including research, presentations, teamwork and assignments. Two units will be externally assessed by online tests and the remainder are internally assessed through assignments that are set and marked by your tutors.

Media

Level 2 Diploma in Creative Media, University of the Arts London (UAL)

This course will introduce you to core Creative Media skills and techniques in moving image, photography and games development. You will develop skills in video shooting, editing and research, which will provide you with the underpinning knowledge and skill set to progress on to Level 3.

Assessment is purely through coursework. You will have many work-related learning opportunities during the course to enhance your future employability including participation in the annual Creative Industries exhibition, 'Roots Festival'.

Music

Level 2 Diploma in Music Performance and Production, University of the Arts London (UAL)

This course will introduce you to core Music Performance and Production skills in composition, popular music performance, recording and DJing. You will develop skills in music theory and music technology which will provide you with the underpinning knowledge and skill set to progress on to Level 3.

Assessment is purely through coursework. You will have many work-related learning opportunities during the course to enhance your future employability including participation in the annual Creative Industries exhibition, 'Roots Festival'.



Performing Arts

Level 2 Diploma in Performing Arts, University of the Arts London (UAL)

This course will introduce you to core Performing Arts and Production skills in acting, dance choreography, theatre staging and lighting and singing. You will develop skills in musical theatre production which will provide you with the underpinning knowledge and skill set to progress on to Level 3.

Assessment is purely through coursework. You will have many work-related learning opportunities during the course to enhance your future employability including participation in the annual Creative Industries exhibition, 'Roots Festival'.



Public Services & Sports

VTCT Level 2 Diploma in Sports Studies (Public service and gym instruction pathways available)

The units in this qualification will develop your knowledge and understanding of science, business and sports management. You will also develop a range of practical skills enabling you to plan and run sport and leisure events, activities and operations. You will develop interpersonal skills that will assist you to communicate effectively with others. Whilst there are no prerequisites to undertaking this qualification, you are expected to have a keen interest and desire to pursue a career in sport, active health or fitness.

You can choose from the three pathways shown to the right.

Sports and Public services students benefit from a range of educational visits to enhance learning which include: fitness testing at Paddington fire station, The Hydra Critical training for investigation and counter terrorism training, as well as outward bound and overseas residential trips.

The planned progression pathways are to Level 3 vocational learning in areas such as Sports Science and Public Services. Careers in the fitness industry are popular and increasing in London and our Public Services are wide ranging including both uniformed and non-uniformed services.

Coaching pathway

Level 1 Coaching qualifications are the first stepping-stone on the core coaching pathway. It will provide you with an introduction to coaching the game and working with players from under 7 to open age. You will gain an insight into the sports, how it is played and how you can coach to better support the development of future players. You will have the opportunity to complete a qualification in Football Coaching as well as in Basketball Coaching.

Public service pathway

Alongside your main qualification you will also have an opportunity to gain a Duke of Edinburgh Award. The DofE will help you to push yourself and have amazing new experiences. It's also about making friends, trying new experiences, being active and healthy or pursuing an interest or activity. You will build confidence, resilience, skills and friendship groups and have a brilliant time doing it. It gives you the added benefit of gaining a competitive edge as employers regard a DofE Award highly, so it will help open the right doors for you. Many of the skills you gain can be applied to your studies as well as your personal and social development.

Gym instructor pathway

Alongside your main qualification you will work towards a Level 2 Certificate in Instructing (Gym) and Register of Exercise Professionals (REPs) qualifications in fitness instructing, personal training and exercise referral, which will enhance your employability. These qualifications meet the health and fitness industry's standards and are highly valued by employers.

Science

BTEC Level 2 Extended Certificate in Applied Science

Do you have an inquisitive mind? Do you want to know how the world around you works? If so, then studying Science at BSix is the right option for you. You will learn and develop your practical and theoretical understanding in Biology, Chemistry and Physics. If you are more confident with coursework than exams, then this is an ideal course for you.

Specific subject entry criteria:

You need to have achieved a 4 (C) in Maths and your four grade 3s at GCSE must include at least double science.

Travel & Tourism

BTEC Level 2 First Extended Certificate in Travel and Tourism

'Visit Britain' forecasts that over 40 million people will visit the UK in 2018 spending approximately 26 billion pounds. Most of these tourists will visit London. Travel and Tourism is an expanding industry and it has grown every year for the past 10 years. One third of new jobs created between 2009 and 2011 were in tourism (ONS employment data). Continued growth has the potential to create 200,000 new jobs in the industry by 2020.

This course is a new offer for the College, we are excited about the opportunities the course will give to students, in terms of progression and employment. With world class tourist operations in London, the course gives the opportunity for numerous visits, experiences and speakers from the industry to bring the course to life and will enable you to see the vast range of tourist attractions on your doorstep.

Science

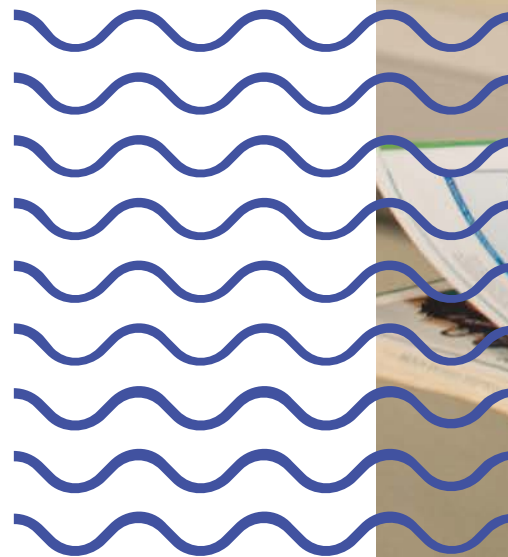
BTEC Level 2 Extended certificate Engineering

The Pearson BTEC Level 1/Level 2 First Award in Engineering provides an engaging, robust, broad-based introduction to engineering. It provides underpinning knowledge, understanding and practical skills that reflect the needs of employers and higher and further education professionals. It presents these skills in a meaningful work-related context, to allow learners to understand theory and application. Assessment is a combination of exams and internally assessed coursework.

Achievement at Level 2 provides a suitable foundation for further study within the sector through progression on to a qualification at Level 3, such as the BTEC Level 3 Nationals in Engineering or Electrical/Electronic Engineering.

Specific subject entry criteria:

You need to have achieved a 4 (C) in Maths and your four grade 3s at GCSE must include at least double science.



GCSE COURSE OPTIONS



1 YEAR



9 COURSES

BSix is one of the few colleges in London to offer a GCSE study programme.

This is an intensive one-year course for students who need an additional year to improve their GCSE grades ready for A-level study or for those who have not had the opportunity to sit GCSE exams previously.

The entry criteria is to have achieved Grade 3s at GCSE including English and Maths or to be assessed at enrolment to be working at this level.





Art & Design GCSE

The GCSE in Art & Design covers areas in artist research, drawing from observation and visual language. You will learn how to translate your creativity into practical art and design pieces. The method of assessment is portfolio based plus an externally set assignment.

Specific subject entry criteria:

Portfolio of art work desirable.



Biology GCSE

The Biology syllabus helps students to understand the world in which they live and take an informed interest in science and scientific developments. Learners gain an understanding of the basic principles of biology through a mix of theoretical and practical studies. They also develop an understanding of the scientific skills essential for further study at A-level, which are also useful in everyday life. As they progress, learners understand how science is studied and practised, and become aware that the results of scientific research can have both good and bad effects on individuals, communities and the environment.

Chemistry GCSE

The Chemistry syllabus enables students to understand the technological world in which they live and take an informed interest in science and scientific developments. Students gain an understanding of the basic principles of Chemistry through a mix of theoretical and practical studies. They also develop an understanding of the scientific skills essential for further study at A-level, skills which are also useful in everyday life.

Film Studies GCSE

Film is a powerful medium which inspires a range of responses from the emotional to the reflective as students are drawn into characters, their narratives and the issues films raise. The root of that power is the immersive audio-visual experience film offers – one which can exploit striking cinematography, composition and locations as well as powerful music and sound. It is not surprising that many consider film to be the major art form of the last hundred years and that many feel it important to study a medium which has such a significant influence on the way people think and feel. Studying a diverse range of films from several different contexts is designed to give learners the opportunity to apply their knowledge and understanding of how films are constructed to their own filmmaking and screenwriting.

Physics GCSE

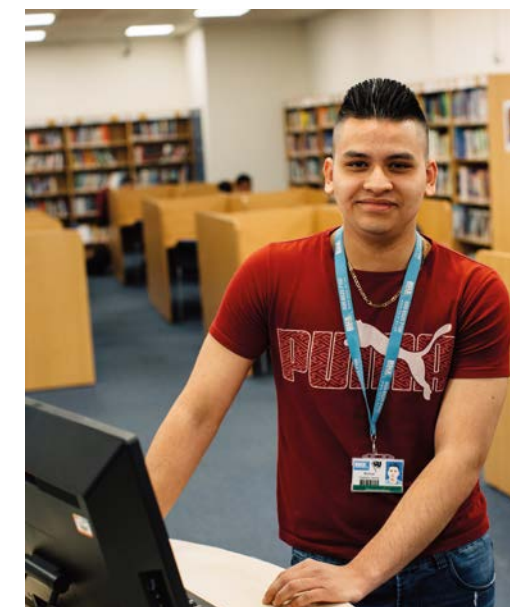
Physics GCSE is an animated, lively course that is taught mostly through experimental exploration. You will receive teaching on the foundation of the subject and will develop a good understanding of key topics such as heat, light, magnetism and electricity.

English GCSE

The course includes reading and analysing a variety of engaging texts and prepares you to become a brilliant writer of both fiction and non-fiction. You will also have the opportunity to discuss, debate and present in your lessons which will develop you into becoming a confident speaker.

Maths GCSE

Mathematical skills are important to us all, and through the GCSE programme you will develop these skills by learning algebra, geometry, trigonometry and statistics, as required by the syllabus. You will learn through formal teaching and individual work on problems and exercises. All theory sessions will be taught in fully equipped classrooms using a range of teaching methods and online learning resources.



Psychology GCSE

Psychology is the study of the mind and behaviour through scientific investigation. Those with an interest in science and scientific investigation are most suited to this subject. You will develop an understanding of the experimental methods used in psychology, an awareness of the usefulness and limitations of these methods. No previous knowledge of Psychology is required but you should have a keen interest in examining behaviour and developing critical analysis skills. The course also includes biological explanations and terminology so an interest in biology would be advantageous. It is important that you are interested in asking questions and can cope with not getting a definitive answer.

Sociology GCSE

Sociology is a subject in which you are expected to take an interest in, and to be critical about, the ways in which government policy impacts on inequalities based on social class, age, gender and ethnicity. In your study of Sociology, you will develop your skills of being objective and analytical and critical through extensive research, précis, writing and debate about current issues, so reading the news is vital. A lot of the topics in Sociology are extremely controversial and require you to have an open mind, always use objective reasoning and be respectful of other opinions.



YOUR FLEXIBLE QUALIFICATION

BSix is known for its flexible approach to individual study programmes no matter what level of study you are engaged with. The following options are available to students enrolled on to a Level 2 or 3 course. These are designed to enhance your learning and increase your skills, confidence and enjoyment; all of which will make you a stronger candidate for future employment.

The following short course qualifications are suitable for anyone who wants to develop their creativity but does not want to necessarily study a creative subject as a full-time programme. The courses will develop your skills in communication, independent learning and working as part of a team.

Level 2/3 Certificate/ Award in Photography (Short Course)

This course is an introduction to photography skills and techniques and is suitable as an enrichment activity as part of your study programme. You can either take this as a Level 2 or Level 3 programme depending on the nature of your study programme.

Level 2/3 Certificate/ Award in Drawing (Short Course)

This course is an introduction to drawing skills and techniques and is suitable as an enrichment activity as part of your study programme. You can either take this as a Level 2 or Level 3 programme depending on the nature of your study programme.

Arts Award Bronze/Silver Events Management (Short Course)

This course is designed to build your skills in arts leadership and as an artist. This course will allow you to undertake independent work within the creative industries such as events management and is suitable as an enrichment activity as part of your study programme.

Level 1 Award Music and Performing (Short Course)

This course is an introduction to music performance and production techniques and is suitable as an enrichment activity as part of your study programme. The course covers popular music performance on a regular basis and/or studio recording production.

Language Qualifications

No matter what level you are studying at, if you are a native speaker in languages other than English, you may choose to add a language qualification to your study programme. This is an excellent way to boost your grades, career prospects and employability. This might be a GCSE or an A-level. The addition of languages will help you to better position yourself in our global society.

LEVEL 3 VOCATIONAL COURSES



2 YEARS



12 COURSES

Students will be predicted to achieve, or have already achieved, four or more Grade 4s in their GCSEs. Some courses have subject specific entry criteria.

These courses will allow you to progress to a Level 4 qualification at college, an apprenticeship at Level 3 or 4, including degree apprenticeships, to university or to employment. All courses have work related learning to allow you to discover an insight to working in the sector in which you are studying. You will also study English and Maths at GCSE if you have not already achieved these. You will develop your communication and employability skills within the tutorial and enrichment activities in your study programme. You will be assessed through coursework as well as exams in certain subjects.

Progression pathway:

You will receive a careers education programme designed to help guide you to your next steps beyond BSix.

Art & Design

Level 3 Extended Diploma in Art & Design, University of the Arts London (UAL)

The Extended Diploma in Art & Design covers techniques and skills in drawing, painting, printmaking, photography, textiles, sculpture and visual communication. You will learn how to work independently within the creative industries, using your creativity to interpret briefs, tailoring them towards your own personal specialism and interests. You will also be taught the diverse skills required by creative professionals from tutors with industry experience. These skills will include using a range of technical equipment and digital software taught in our dedicated art studios – an open-plan space that encourages ideas sharing between students. The qualification is 100% coursework.

This course is suitable for anyone who wishes to pursue a career in Advertising, Marketing, Graphic Design, Fabric/Textile Design, Fashion, Photography, Fine Art, Interior Design and Architecture. You can also progress on to the Level 4 Foundation Diploma in Art & Design.

Specific subject entry criteria:

A GCSE in an art related subject is desirable and/or the ability to demonstrate a portfolio of work or a Level 2 Diploma equivalent. Also, GCSEs in either Maths or English.



Business

BTEC Level 3 Extended Diploma in Business Exam Board (EDEXCEL)

This course is designed to broaden your knowledge of the business sector and to develop important personal, academic and business skills. You will cover the fundamental business disciplines and specialised areas such as, Managing Business Events, Managing Business Information and Market Research in Business. As the programme has an emphasis on leadership and management, you will be expected to engage in a project experience, whereby you will be given opportunities to manage live projects. There are vocationally linked visits that include the Bank of England, The Supreme Court, KPMG and various universities as well as business skills workshops. There is also a work placement in your first year.

The course could lead to employment in a wide range of careers including Business, Marketing, Human Resources, Finance, Management or Customer Service.



Childcare

NCFE Technical Level 3 Diploma in Childcare and Education (Early Years Educator)

The Technical Level 3 Diploma in Childcare and Education (Early Years Educator) will enable you to gain the knowledge and experience which will allow you to work with children from birth to 7 years across a variety of settings. The course runs for two years and will cover a variety of units. An extended placement is a requirement of this course and students will experience a range of different age groups within nurseries and schools.

The Technical Level 3 Diploma in Childcare and Education enables you to enter the workforce as an Early Years Educator or access Higher Education to continue your studies. Various job roles include:

- Early Year's Educator
- Practitioner in day nurseries, nursery schools and reception classes
- Preschool worker
- Home-based childminder
- Nanny
- Health centre early years specialist

NCFE CACHE Level 3 Award in ICT in Early Years

This qualification is run alongside the NCFE Technical Level 3 Diploma in Childcare and Education (Early Years Educator). Students will cover two units within this qualification: Facilitate good practice in the use of ICT in Early Years settings and Support Children's Learning using ICT.

NCFE CACHE Level 3 Award in Transition to Play Work (from Early Years)

This qualification is based on the National Occupational Standards for Play work and will develop the knowledge needed when working in play work settings. It covers the theories and principles of play and play work, risk management and how to support the needs and rights of children to create diverse play environments.

This qualification can be completed at the end of the NCFE Technical Level 3 Diploma in Childcare and Education (Early Years Educator) course for students that want to explore their options with play work as part of their Early Years career.



Health & Social Care

The BTEC Level 3 Extended Diploma in Health and Social Care

The health and social care sector is one of the biggest employers in the UK with nearly four million people working in the sector. The demand for jobs is expected to increase by another 126,000 by 2020 (UK commission for employment and skills) as we have an increasingly elderly population who are living longer than ever. Demand for skilled health and social care workers has never been higher.

This course explores many aspects of health and social care ranging from human lifespan development and public health to complementary medicines and individual care and support. There is an emphasis on real world experience through a one day a week work placement and the chance to hear from and speak to professionals. Speakers include nurses, therapists and meditators. Visits are made to the Nursing Department at UEL where they have a state-of-the-art ward simulation and the Humanities department at Sussex University where students benefit from a presentation on health inequalities by a leading Professor. There is also an opportunity for a fully funded two-week placement in a care home or nursery in Portugal through our partnership with Erasmus.

Successful completion of the course can lead on to various degree courses at university ranging from counselling services, housing, youth and community work, early years and education studies. Alternatively, you can enter employment or apprenticeships in the health or care sector.

ICT

BTEC Level 3 Extended Diploma in IT (3 A-levels equivalent)

The growth of the digital economy and the emergence of new technologies has led to skills shortages and increased demand for graduates with the right qualifications. There are skills shortages in areas such as cyber security, and protection of data.

The BTEC Level 3 Extended Diploma in IT course was constructed to equip learners with essential knowledge and skills to allow them to progress to the next stage in their career plan. The course is varied in its content to ensure all learners have a secure understanding of different areas of IT and Computing. You will cover topics such as: IT in the Business world, Games Design, Website production, Hardware and Software, Graphic Design and Database design and build.

IT related careers include:

- Software Tester
- Technical Support Analyst
- Network Engineer
- Web Designer
- Database Designer

Specific subject entry criteria:

GCSE English at Grade 4 and Maths at Grade 5.

Media

Level 3 Extended Diploma in Creative Media, University of the Arts London (UAL)

The Extended Diploma in Creative Media covers a range of techniques and skills in film, television, print and photography. You will learn about the media industry, its structure and many of the key issues that media practitioners face. You will also be taught the diverse production skills required for working in the media such as working Canon DSLR cameras, shooting and editing using the Adobe Creative Suite, website publishing, green screen technology and photography.

This course is suitable for anyone who wishes to pursue a career in the film and television industries, marketing and advertising, public relations and media research.

Specific subject entry criteria:

GCSE in either Maths or English.

Music

Level 3 Extended Diploma in Music Performance and Production, University of the Arts London (UAL)

This course covers advanced music production techniques using industry standard software such as Logic Pro, Ableton Live and Serato DJ. You will gain an insight into the music industry and will be encouraged to create your own record company and music products. You will also develop your skills in popular music performance and will regularly perform in events in college and around the borough of Hackney.

This course is suitable for anyone who wishes to pursue a career in the music industry as a producer, sessional musician, events manager, publisher or an artist manager. This course will also give you access to music undergraduate degree programmes.

Specific subject entry criteria:

GCSE in either Maths or English.

Nursing

Access to HE: Nursing

The Access to Higher Education Diploma (Nursing) is an OCN Level 3 qualification which prepares people without traditional qualifications for study at university.

It is designed for:

- Adults with a current or previous role in care e.g. nursery assistant, care assistant, care worker
- Adults who, because of social, educational or individual circumstances, were unable to participate in or benefit from initial education
- Adults from groups under-represented in higher education
- Adults seeking a change of direction because of unemployment or lack of career opportunities in their previous field and who have a demonstrable interest in entering a nursing related profession.

Specific subject entry criteria:

This is a Level 3 programme, so the expectation will be that applicants will already have Level 2 English Language, Mathematics and Science. When you apply, you will be required to take a formal entry assessment for Literacy, Numeracy and Biology.

Public Services

BTEC Level 3 Extended Diploma in Public Service

If you want to make a real difference in the local community or make an impact at a national or even global level. Our Public Services courses are designed to help you achieve your goals in whichever public service it is that you wish to join e.g. the fire service, paramedics, police or armed forces.

Our courses cover a variety of subjects that will enable you to demonstrate a full understanding of the skills required in this highly competitive sector. You will be encouraged to develop effective teamwork and leadership skills which complement the values and standards expected by any of the uniformed services. As part of the course you will have access to our fully equipped fitness suite. We also have links with our local university where students go to use their state-of-the-art fitness testing equipment.

Students benefit from regular trips to enhance learning which include: Bletchley Park, the home of code breaking, visits to meet and see how counter terrorist dogs are selected and trained, visits to Intelligence Services and UK Border Force and The Hydra Critical training for investigation and counter terrorism training. You will also benefit from outward bound residentials in this country and abroad.

Students progress to careers in the Metropolitan Police, Royal Marines, Fire Department, Parachute Regiment, UK Border Force, MI5, Youth Offending Teams or Ambulance Service and paramedics.



Science

BTEC Level 3 Extended Diploma in Applied Science

The BTEC Level 3 Extended Diploma in Applied Science is highly rewarding and provides a good alternative to Science A-levels. It is equivalent to three A-levels and is a valid progression route to university. The course is designed with two main purposes – to outline the strong science background required at this level of study and to put science into a useful context through applied learning. The core units will help you to develop a range of skills including practical laboratory skills, presentation skills and written skills.

Careers in science are genuinely some of the most exciting, interesting and significant out there. Jobs in this sector stretch across many different areas ranging from astrophysics and marine biology to zoological sciences and pharmacology. To follow a scientific career path you need to be logical, ambitious and (most importantly) passionate about your chosen subject.



Sports

BTEC Level 3 Sports and Exercise Science

Sport and exercise is a rapidly expanding global industry, while levels of public fitness and health are important issues high on the political agenda. For this reason, sport and exercise scientists are in increasing demand, particularly given the drive of professional athletes to maximise their potential and the efforts of health officials to encourage participation in exercise and physical activity.

Sport and exercise sciences consider the theoretical knowledge and practical application of scientific principles relating to physiology, biochemistry, nutrition, biomechanics and psychology, to maximise sports performance and improve general health and wellbeing through exercise.

As part of this course there will also be an opportunity for you to work towards the Register of Exercise Professionals (REPs) qualifications in fitness instructing, personal training and exercise referral, which will enhance your employability. These qualifications meet the health and fitness industry's standards and are highly valued by employers.

Career opportunities are wide-ranging including:

- Sports Coaching
- Gym/Fitness Instructor
- Leisure Management
- Sports Therapy and Rehabilitation
- Sports Equipment Design
- Diet and Nutrition Expert
- Sports Psychology

A-LEVEL COURSE OPTIONS



2 YEARS



27 COURSES

You will need at least five GCSEs at grade A*–C or grades 9–4 to study A-levels.

Humanities students will need to have GCSE English Language at Grade C or 5 or above.

Science and Maths students will need to have GCSE Maths and English, as well as core and additional science at grade C or grade 5 or above. There may be additional specific entry criteria for certain subjects.

Our flexible approach

At Level 3 there is much choice and pressure on students to gain the best qualifications to enable progression to apprenticeships, university or employment. At BSix we recognise and celebrate diversity and focus on how this can be best represented within each student's study programme. This means that you can enrol on to a programme that is right for you and for your career plans. There is the option to study 3 A-levels or to study a combination of A-level and BTEC Certificate courses. The BTEC certificate options have been chosen carefully to meet employer needs and career aims.

Progression pathway:

You will receive a careers education programme designed to help guide you to your next steps beyond BSix. Your options are wide ranging including progression to a Level 4 qualification at college, an apprenticeship at Level 3 or 4, including degree apprenticeships, a degree course at university or to employment.

Art

A-level Art & Design (AQA)

A-level Art & Design covers a wide range of basic skills such as drawing, painting, printmaking and sculpture but extends them through more rigorous and extended levels of experimentation and research. The course is a general Art & Design endorsement, so you can choose to take the set projects into any area of Art & Design that you wish. Art & Design is both a practical and academic subject, where you will develop your personal direction as an artist or designer through observation, experimentation and realisation.

This course is suitable for anyone who wishes to pursue a career in:

- Architecture
- Fine art
- Graphic design
- Fashion and textiles
- Illustration
- Arts management

Specific subject entry criteria:

GCSE in Art & Design or an arts related subject and GCSE English at Grade 5 or above.

Biology

A-level Biology (OCR)

Biology is the scientific study of life. It encompasses the investigation of living organisms and life processes from the molecular, through cells and individual organisms to populations and whole communities of animals and plants.

It is highly relevant to everyday life: from your own health, to the country's food supply and the control of disease. Biology is one of the most dynamic fields of study with new discoveries making headline news on a regular basis. Examples of this include: stem cell therapy, tissue engineering, GM crops, designer babies and regenerative medicine. The biological sciences are very diverse – from molecular biology and biochemistry to evolution and ecology. A qualification in biology equips you with numerous skills: literacy, numeracy, analytical reasoning and will enable you to make connections between natural, social, economic, political and technological fields.

Careers in Biology span across the pharmaceutical industry, clinical and health professions and conservation.

Business

A-level Business (Pearson)

If you are interested in the world of business and its innovative and exciting theories and you would like to examine, understand and practise the skills, knowledge and attributes of successful entrepreneurs, then this is a fantastic course for you. Whilst studying A-level Business you will apply your knowledge and understanding to real-life business contexts, reflecting on issues impacting on modern businesses and real business case studies. You will develop key transferable skills including numeracy, communication and an understanding of the business environment and commercial awareness, all of which are highly valued by universities and industry.



Business

Applied Business Extended Certificate (Edexcel) (A-level equivalent)

The Applied Business Extended Certificate can be studied alongside two other A-levels or as part of a wider Level 3 study programme. It is for learners who are interested in studying business as part of a range of subjects and is a combination of coursework and examination.

You will study a range of business topics including:

- Business environments
- Finance
- Marketing
- Human resources
- Accounting
- Marketing
- Law

Careers in business are wide-ranging including:

- Business Management
- Accountancy
- Finance and Marketing

Chemistry

A-level Chemistry (OCR)

Chemistry is one of the most exciting and challenging A levels. It will help you develop an understanding of how the chemical elements interact and the role they play in making up our world and beyond. The course will demonstrate the relevance of science beyond the laboratory and will advance your practical, analytical, evaluative and synoptic skills.

You will study various modules including:

- Development of practical skills in chemistry
- Foundations in chemistry atoms, compounds, molecules and equations
- The Periodic table and energy and periodicity
- Core organic chemistry basic concepts, hydrocarbons, alcohols and haloalkanes
- Physical chemistry and transition elements, reaction rates and equilibrium, pH and buffers, enthalpy, entropy and free energy, redox and electrode potentials
- Organic chemistry and analysis
- Aromatic compounds, carbonyl compounds, carboxylic acids and esters, nitrogen compounds, polymers, organic synthesis, chromatography and spectroscopy.

Careers in Chemistry are wide-ranging, and opportunities exist both inside and outside the lab. Careers range from food and clothing technology, to pharmacology and forensic science.



Find out more about a course: www.bsix.ac.uk

Computer Science

A-level Computer Science (AQA)

Computer Science is a fascinating subject that teaches you how to think through problem-solving tasks and challenges. This is a two-year course that covers the theory of computation and many practical elements. You will become a competent programmer in Visual Basic.NET as well as working on an investigative project on a topic of interest to you. A qualification in Computer Science equips you with numerous skills: literacy, numeracy, analytical reasoning and problem-solving.

You will be assessed formally through two exams (80%), one of which is an on-screen examination and a coursework element (20%). Taking A-level Maths with this A-level will be advantageous but not essential.

Careers in Computer Science are wide-ranging including:

- Software Engineering
- Gaming, Artificial Intelligence
- Cyber Security
- Data Handling
- Aerospace Technology
- Business Systems

Specific subject entry criteria:

You need to have achieved at least 5 GCSEs at grade 4 or above (A*–C), these need to include Maths at grade 5 and English.



Computing

BTEC Level 3 Extended Certificate in Computing (A-level equivalent)

The BTEC Level 3 Extended Certificate in Computing course was constructed to equip learners with essential knowledge and skills to prepare them for the world of Computing. Computing has become a core function in most organisations and there is a huge emphasis on employing candidates with a good background in this area. You will study a range of topics including: Principles of Computer Science, Fundamentals of Computer Systems, IT Systems Security and Encryption and Graphic Design.

Career fields for progression include:

- Software Tester
- Technical Support Analyst
- Programmer
- Networking Advisor

Specific subject entry criteria:

English at Grade 6 and Maths at Grade 6.

Economics

A-level Economics (AQA)

Economics is a rewarding course, offering highly marketable skills in a way that is both stimulating and analytically rigorous. Have you ever asked yourself any of these questions: What effect will the 'Brexit' vote have on your life? Why European food surpluses are not given to poor countries suffering famine? These are some of the many questions dealt with in Economics.

Careers in economics are varied and include banking, accountancy, economics in business and financial consultancy, economics in the public sector, actuarial and data analysis careers.

Engineering

BTEC Level 3 Engineering Certificate (A-level equivalent)

Students completing their BTEC Nationals in Engineering will be aiming to go on to employment, often via higher education. These qualifications have been approved by the engineering professional bodies on behalf of the Engineering Council as contributing to the requirements for professional registration as an Engineering Technician (EngTech). It provides the opportunity to develop knowledge and skills in the design, development and manufacture and maintenance of engineering products and systems.

Specific subject entry criteria:

GCSE Maths Grade 5 or above.

English Language

A-level English Language (AQA)

English Language is for students who enjoyed opportunities for exploring English Language at GCSE. It will prepare you for the full A Level in English Language and further study of English or other subjects that involve critical analysis of texts, such as Media, Journalism, Film or Art.

The study of English Language will help you develop a range of key skills that can be applied in the real world, including clarity of thought and expression, critical and analytical skills, team working, giving and receiving feedback and contextual and cultural awareness. You will learn about language varieties of English and study a range of sources such as written, spoken and electronic texts for a variety of audiences. You will further develop methods

English

A-level English Language and Literature (OCR)

English Language and Literature offers a wide range of opportunities to develop an understanding and appreciation of reading fiction and non-fiction texts. The course is ideal for anyone who enjoys reading widely and is keen to develop analytical and creative writing skills. You will study a wide range of literary and non-literary genres such as fiction, drama and poetry; as well as journalism, autobiography, letters, scripts, graphic non-fiction, diaries and speeches. You will explore and compare how writers and speakers use language and structure to express their thoughts and feelings and how language choices are influenced by context, audience, genre and purpose. This course also gives you a chance to deepen your enjoyment of English language and literature both through reading and analysis, and by developing your own creative writing skills.

of language analysis and writing skills. Over the course of two years you will study English language under the microscope, compare and contrast texts, study child language acquisition, language change and language in the media. You will also have the opportunity to produce a portfolio of 3,000 words on your own independent language research project.

You will develop skills such as:

- Critical and analytical skills
- Technical writing skills
- Awareness of different writing forms and genres
- How to give and receive feedback
- Independent working and time management

English Literature

A-level English Literature (OCR)

English Literature students will study a variety of texts over two years and you will have the opportunity to explore literature of the past and present through drama, prose and poetry. You will discover new perspectives, ideas and values by investigating cultural, social, historical and political influences to understand how writers use literary and dramatic effects to shape meaning. Interpretation and personal responses are key to literature and you will engage in reading, analytical writing and class discussions to explore the significance of the way literary texts

are written and received. You will view authors through critical lenses such as feminism and Marxism. The teaching of the texts will involve drama activities, visiting practitioners and trips to the theatre. In the second year you will develop a coursework portfolio of 3,000 words on three modern texts.

The analytical, interpretative, communication and discursive skills you will develop will be ideal for careers in journalism, media, publishing, education, theatre, law and business.

Film

A-level Film Studies (Eduqas)

Film Studies is a wide and exciting subject to study. Film is widely acknowledged as a major art form of the 20th Century and today film continues to be an important part of most people's cultural experience. Film Studies is designed to build upon your own experience of film – as consumers and creators – and to encourage recognition of the complexity of this experience within an increasingly globalised environment.

Film can facilitate careers in all the creative industries including film and television, education, academic careers and public sector areas such as the civil service and local government if combined with the appropriate degree.

History

A-level History (Pearson)

Why did a revolution break out in England in the C17th? Why did a revolution take place in Russia in 1917? Why did the US civil rights movement peak in the late 1960s? What are the similarities and differences between these periods of dramatic change? Debating these fascinating periods of history will enrich our understanding of the present, our position within it, and how we might think historically about it.

Enrichment activities have included visits from Professor John Morrill of Cambridge University to debate the C17th, historian/Hip Hop artist Akala to debate Ancient African civilisations and the Haitian revolution. We've visited Oxford University to meet Malcolm X's nephew and have links with libraries, museums and archives.

History provides the basis for a variety of career paths including law, journalism, politics, heritage, museums, archives and teaching.

IT

BTEC Level 3 Certificate in IT (A-level equivalent)

The BTEC Level 3 Certificate in IT course is varied in its content to ensure all learners have a secure understanding of different areas of IT and Computing. The following are some of the content that is covered: IT in the business world, website production, hardware and software, graphic design, database design and build. Assessment is primarily through coursework submission.

Career fields for progression include:

- Software Tester
- Technical Support Analyst
- Programmer
- Networking Advisor

Law

BTEC Level 3 Extended Certificate in Applied Law (A-level equivalent)

The course is designed for students who would like to find out more about Law and the Legal System and who prefer a combination of coursework and examination. You will develop effective communication, research, analytical and reading legal texts skills. There are links with a range of London law firms for workshops and guest speakers, and visits to the Supreme Court and criminal courts. Students can progress to University to study non-related law degrees as well as a straight law degree.

The study of Law can lead to various careers in law, such as working as a Solicitor, Barrister or Paralegal. It is also a useful foundation for careers such as business, government, banking and the police force. Studying law complements many other subjects and some common combinations include English, History, Sociology, Psychology, Politics and Business.



Find out more about a course: www.bsix.ac.uk

Maths

A-level Mathematics (Edexcel)

One of the most popular choices at A-level, A-level Mathematics helps to extend the methods and techniques which you have learned at GCSE. Mathematics is a facilitating subject and is therefore well respected by universities and employers alike. A-level Maths teaches you to think logically, analytically, creatively and strategically, and importantly develops your numeracy skills and the ability to interpret data.

Specific subject entry criteria:

GCSE Mathematics at Grade 5 or above.

Further Maths

A-level Further Maths (Edexcel)

Further Mathematics is the subject for you if you love Mathematics and are good at it! Students taking Further Mathematics find it to be enjoyable, rewarding, stimulating and empowering. Further Mathematics provides a chance to explore new concepts, such as the square roots of negative numbers, and the idea of raising numbers to the power of pi. Students who take Further Mathematics generally find that their Mathematics grade is boosted, and if you are thinking of studying Mathematics or a Mathematics heavy subject at university, Further Mathematics will ease the transition. Taking Further Mathematics will also allow you to potentially be part of the UKMT Senior Team Challenge event, to which we send a team to each year.

Maths

Level 3 Certificate in Mathematical Studies (Core Maths AQA)

Core Maths Level 3 is for students who have passed GCSE Maths at Grade 5 or above but would not like to study A-level Mathematics. Core Maths develops that which you have learned during your GCSE study, and focusses heavily on the application of Maths to your real-life experiences. Exam questions range from asking you to estimate how many times your heart beats in your lifetime, to making cost-benefit analysis decisions, to Brexit.

This course will support you in any Level 3 course you may take, from Business, IT and Sociology, to Health and Social Care. Universities are welcoming the Core Maths qualification, as it equips students with some of the skills necessary for university study. There is no second year of this course.

Careers involving Maths are often interesting, rewarding and well paid. Careers in Engineering, Finance and Banking, Insurance and Risk, IT and Computers, Medicine and Health, Education, the Civil Service and Academia are all open to you should you take A-level Mathematics. For further information see www.mathscareers.org.uk

Specific subject entry criteria:

GCSE Mathematics at Grade 6 (B) or above. Students studying Further Mathematics must also study Mathematics.

Media

A-level Media Studies (Eduqas)

A-level Media Studies provides you with the tools to explore, understand and analyse a range of media texts and forms. We will teach you how to read media texts so that you can investigate established and evolving forms of media. You will assess the changing mediascape and the impact on relationships between audience and producers and how the media helps shape our ideas about contemporary culture and society. You will engage with a range of concepts, theories, contexts and critical debates in an exciting, dynamic and increasingly relevant course.

The course also offers you the chance to explore your creativity with the exciting possibility of creating print, online and audio-visual products. You will create sophisticated texts and reflect on the power of the media.

A-level media studies can prepare you for a range of careers including marketing, public relations, journalism and a range of industry related degrees and apprenticeships.

Modern Foreign Languages

A-level Modern Foreign Languages

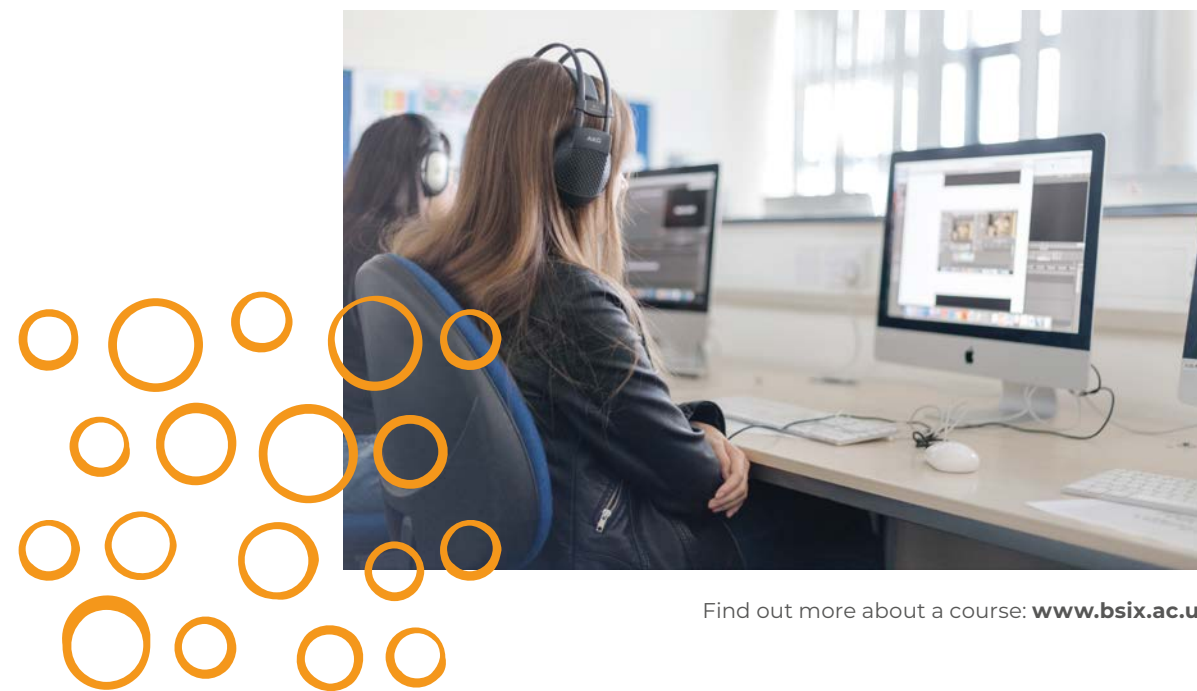
Studying languages at Bsix enables you to study technological and social change, looking at diversity and the benefits it brings. The specification includes highlights of the target language countries' artistic culture, including music and cinema, and political engagement and who wields political power in the foreign languages speaking countries.

Students also explore the influence of the past on present-day foreign language-speaking communities. Throughout their studies, students will learn the language in the context of the issues and influences which have shaped them. Assessment tasks will be varied and cover listening, speaking, reading and writing skills.

You can decide to study a language as part of your study programme for one year to achieve an AS-Level qualification or over two years to achieve a full A-Level.

We offer a qualification in the following languages:

- Spanish
- Portuguese
- French
- Arabic
- Turkish
- Italian



Music

BTEC Extended Certificate in Music (A-level equivalent)

The BTEC Extended Certificate in Music covers areas of music performance and music production. The course is tailored to individual needs and covers a wide range of practical disciplines such as popular music performance, DJing with Serato, live electronics with Ableton Push, contemporary production and recording with Logic Pro X.

This course is suitable for anyone who wishes to pursue a career as a sessional musician, sound engineer, artist/events manager or a composer.

Specific subject entry criteria:

A GCSE in Music is desirable and/or the ability to demonstrate competency in a musical instrument, singing or use of production software. GCSE English at Grade 5 or above is also required.

Photography

A-level Photography (AQA)

A-level Photography will introduce you to a variety of photographic media, techniques and processes, using both traditional and new technologies. This course will allow you to explore and produce work in areas such as: portraiture, landscape photography, still life photography, documentary photography, photojournalism, fashion photography, experimental imagery, multimedia and photographic installation.

This course is suitable for anyone who wishes to pursue a career in marketing and advertising, freelance photography, digital treatment, editing and graphic design.

Specific subject entry criteria:

GCSE in Art & Design or an arts related subject and GCSE English at Grade 5 or above is also required.



Physics

A-level Physics (OCR)

Physics is crucial to understanding the world around us, the world inside us and the world beyond us. From developing theories of the universe to developing sustainable energy solutions; healing joints to curing cancer, physics is the most basic and fundamental science that underpins all other sciences.

A-level Physics is an animated, lively course that is taught through a combination of experimental investigation and classroom learning. You will build upon existing knowledge of the subject and will develop a further understanding of key topics such as mechanics, atomic structure and the Newtonian World.

Many students find it helpful to study A-level Mathematics alongside A-level Physics, due to the strong mathematical principles used to explain physical discoveries and ideas.

The science department has a wide range of cutting edge facilities to aid students' learning, including high-quality virtual oscilloscopes and the latest digital video cameras. The department also benefits from a variety of classical apparatus, allowing students to develop a deeper understanding of traditional models and principles.

Careers in Physics play a crucial role in the development of cutting-edge technology; from high-performance racing equipment to the latest smart phone – physics is at the heart of the world's most important technological and scientific advances.

Politics

A-level Politics (Pearson)

Politics is a subject in which you are expected to take an interest in, and to be critical about, the ways in which both this country and the world are run. Following the news to ensure you are well-informed about the latest developments is essential. "Who has power?" is a central question on this course – which we ask in a UK context in the first year of the course; and in a global one in the second year. In the second year we also study political ideas, including those of socialism, liberalism, conservatism and nationalism, which inform views about how the world should be run, and who should have power.

Politics provides a basis for a variety of careers such as within political representation, the civil service, the not-for-profit sector, journalism and public relations, local government, consultancy, business and law.

Psychology

A-level Psychology (AQA)

Most people find Psychology a fascinating subject because it's about us: how our minds work; how we cope with the challenges of life; why we do the things we do; why we feel the way we feel. However, it is important to remember that Psychology is a Science subject, so we must look at hard evidence before we come to conclusions about the mysteries of the human mind. Studying Psychology will help you understand more about yourself and other people; it will help you to develop your logical thinking skills and your memory. There are also plenty of opportunities for discussion and to apply what you are learning to your own life situation.

Psychology

Applied Psychology Extended Certificate (Pearson: A-level equivalent)

Psychology is the science of mind and behaviour. It acknowledges biology, philosophy, statistics and social sciences in the way we understand people. There are four units to cover; three of which are examined under timed conditions. In Unit 1 we focus on social, cognitive, learning and biological methods to explain behaviour such as aggression, gender identity and consumerism. In Unit 2 you will run your own experiment in an area you are interested in and submit your final work to your teacher at a specified date. Unit 3 is Health Psychology where we look at the research involved in stress and addiction and how we can promote positive behavioural change. You will also learn about treatments for addiction and stress. Unit 4 may cover Criminal and Forensics, Child Development, Psychopathology or Sport Psychology. There will be the opportunity to go on trips and visits to expand your understanding and we will have guest speakers at various points in the year.

The skills learnt through studying Psychology are transferable to many career routes and could also lead on to a range of Humanities based degree courses at University. Graduates might seek jobs in fields such as psychiatric nursing, therapy, police or certain jobs within the business sector.



Religious Studies

A-level Religious Studies (Eduqas)

Religious studies combine philosophy with the study of religion. You need to be interested in the nature of religious beliefs, and be prepared to be critical of those beliefs. A common theme in much of what we study is the fundamental question of how we should live, which we explore from diverse perspectives. The course is divided into 3 units: a study of Islam; philosophy of religion; and ethics.

Philosophy of religion examines arguments for and against the existence of God and questions how we understand religious experiences and language. The study of Islam examines Muslim beliefs and practices, in addition to questions concerning how Muslims should live in contemporary society. Ethics examines a variety of perspectives on questions of right and wrong, including some with a religious and some with a secular basis.

Possible careers include:

- Teaching
- Civil Service
- Not-for-profit sector
- Journalism and Public Relations
- Local Government
- Consultancy
- Business
- Law



Sociology

A-level Sociology (AQA)

Sociology is the systematic study of society. It is about critically looking at the world around you to understand some of the problems that face society and how society has changed over time. Sociology is a subject in which you are expected to take an interest and to be critical about the ways in which government policy impacts on inequalities based on social class, age, gender and ethnicity. A lot of the topics in Sociology are extremely controversial and require you to have an open mind, use objective reasoning and be respectful of other opinions.

Sociology poses many important questions about contemporary life and our role in society. For example, 'Why do some people commit more crime than others?', 'Why are girls now out-performing boys in school?', 'Does the media cause violence?' and 'Is society becoming less religious?'. We are interested in not just what society is but why things happen in society.

Sociology supports several careers which demand objective problem-solving skills, research methods and critical thinking such as: law, advocacy, social work, prison officer, police officer.

YOUR FLEXIBLE QUALIFICATION

BSix is known for its flexible approach to individual study programmes no matter what level of study you are engaged with. The following options are available to students enrolled on to a Level 3 course. These are designed to enhance your learning and increase your skills, confidence and enjoyment; all of which will make you a stronger candidate for future employment.

Extended Project Qualification (EPQ) – AQA

The EPQ is a unique and exciting opportunity for you to research a subject of your own interest and produce an extended essay of 5,000 words, or a product such as a performance or artefact. You will keep a log of the stages of your production and deliver a presentation at the end of your project to share your knowledge and findings. This deep learning experience helps students develop stand-out skills for university and employment, such as research methods, academic writing and presentation skills. We work in partnership with the University of Greenwich who deliver sessions to support your study and research skills development in order to achieve the EPQ.

Duke of Edinburgh Award

Public Service and Sports students undertake this award as part of their study programme, but it is open to all students at Level 3. The DofE takes you into a place where you'll push yourself and have amazing new experiences. You will build confidence, resilience, skills and friendship groups and have a brilliant time doing it. It gives you the added benefit of gaining a competitive edge, as employers regard a DofE Award highly, so it will help open the right doors for you.

Language Qualifications

No matter what level you are studying at, if you are a native speaker in languages other than English, you may choose to add a language qualification to your study programme. This is an excellent way to boost your grades, career prospects and employability. This might be a GCSE or an A-level. The addition of languages will help you to better position yourself in our global society.

LEVEL 4 VOCATIONAL COURSES

Level 4 Foundation Diploma in Art & Design



1 YEAR



1 COURSE

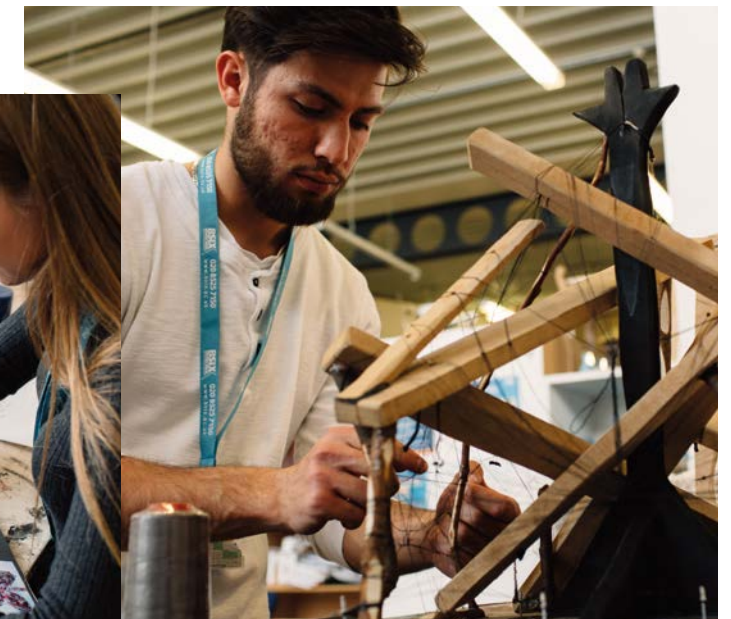
This is a new course on offer for 2019/20 and provides the basis for students to progress after one year on to an Arts degree course at university.

The Foundation Diploma is a pivotal qualification, which provides a transition from general education to specialist art & design education. This course will enable you to make an informed decision when applying to Higher Education or seeking employment within an arts related industry. The course is designed to encourage exploration, experimentation and risk taking. You will learn through projects, assignments, presentations and group critiques enabling you to develop strong communication skills to support the transition into a specialist art & design education and career.

This course is suitable for anyone who wishes to pursue higher education in specialist art universities such as Goldsmiths or University of the Arts London. This course is also suitable for anyone that wants to pursue a career in Architecture.

Specific subject entry criteria:

- A portfolio of artwork
- Minimum of five GCSEs at Grade 4 or above, including Maths and English
- Three A-levels (preferably in a relevant creative subject) or equivalent Level 3 qualification in Art & Design





HOW TO APPLY

Applying to BSix

Apply online:

You can apply online by going to our website www.bsix.ac.uk

You will also need to request a reference from your school. You can download a reference form from the 'Apply' page of our website and we will also send you a copy when we invite you to your interview.

Note: If you have any additional support needs e.g. dyslexia or extra time in exams, please make sure you tell us on your application form and at interview so we can ensure you receive appropriate support.

Apply by post/in person:

You can also apply to BSix using one of our paper application forms. Once you have completed section one you will need to ask your referee to complete section two of the form – this would usually be your Head of Year or your form teacher.

Please return your completed form to:
BSix Brooke House Sixth Form
College Kenninghall Road
London
E5 8BP

THE APPLICATION PROCESS

Acknowledgement Letter

Once we have received your application form we will send you an acknowledgement letter and an invitation to your interview by post and electronically. We will also send you a reminder email and text message a few days before your actual interview. This will include 'Be Ready for Your BSix Interview' information.

Interview

Your interview will consist of a welcome talk from a member of the senior management team, an interview with a teacher or Head of Department and an opportunity to talk to our Student Ambassadors.

The Offer

At your interview we are usually able to make you an offer of a place to study at BSix. There are two types of offer:

- **Unconditional** – If you meet all the entry requirements and already have results we will offer you an unconditional place.
- **Conditional** – If you are awaiting exam results or your reference is delayed we will offer you a conditional place. Your place on your chosen course will depend on your exam results and a satisfactory reference.

Enrolment

You will be invited to enrol on GCSE results day. You will need to bring proof of your exam results with you and your passport. If you don't receive the grades required for your offer we will try to provide you with a suitable alternative course. Please be aware that the sooner you get your application to us, the sooner we are able to invite you for interview and, subject to eligibility and references, offer you a place.



Apply today

Don't leave it too late as we run a number of popular courses. If you need any advice about applying to study at BSix Brooke House Sixth Form College, please contact Admissions on Freephone **0800 3892 947** or email info@bsix.ac.uk



HOW TO FIND US

Address

BSix Brooke House Sixth Form College
Kenninghall Road, London E5 8BP

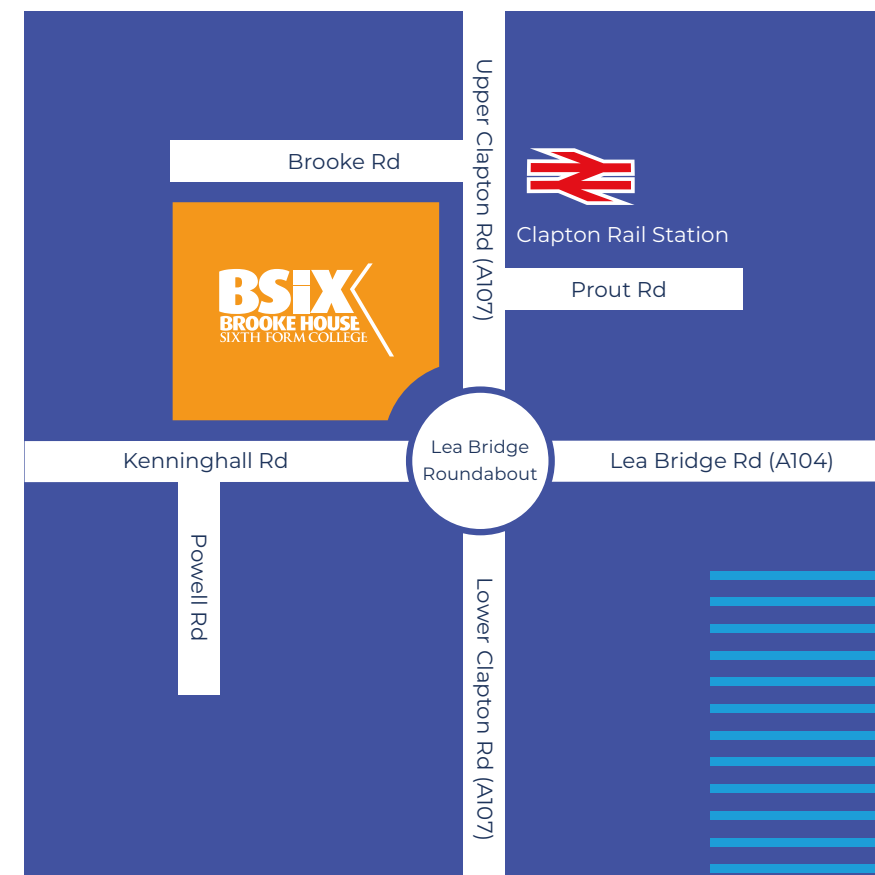
Local bus routes

38, 48, 55, 106, 253, 254, 308, 393, 425, 488

Nearest National Rail/ Overground stations

Clapton, Dalston Junction, Hackney Central,
Hackney Downs, Rectory Road

To plan your journey to BSix, go to
www.bsix.ac.uk/contact



| Course | Entry | Level 1 | Level 2 | GCSE | Level 3 | A-level | Level 4 |
|----------------------|-------|---------|---------|------|---------|---------|---------|
| Art & Design | | | 34 | 46 | 52 | 60 | 73 |
| Biology | | | | 46 | | 60 | |
| Business Studies | | 28 | 34 | | 52 | 60 | |
| Chemistry | | | | 47 | | 61 | |
| Childcare | | | 35 | | 53 | | |
| Computer Science | | | | | | 62 | |
| Computing | | | | | | 62 | |
| Creative Media | | 28 | | | | | |
| Economics | | | | | | 62 | |
| Engineering | | | | | | 63 | |
| English | | 29 | | 47 | | 63 | |
| ESOL | 25 | | | | | | |
| Film Studies | | | | 47 | | 64 | |
| Health & Social Care | | 29 | 36 | | 54 | | |
| History | | | | | | 64 | |
| ICT | | | 39 | | 54 | 65 | |
| Law | | | | | | 65 | |
| Mathematics | | 29 | | 47 | | 66 | |
| Media Studies | | | 39 | | 55 | 67 | |
| Modern Languages | | | | | | 67 | |
| Music | | | 40 | | 55 | 68 | |
| Nursing | | | | | 55 | | |
| Performing Arts | | | 40 | | | | |
| Photography | | | | | | 68 | |
| Physics | | | | 47 | | 68 | |
| Politics | | | | | | 69 | |
| Psychology | | | | 48 | | 69 | |
| Public Services | | | 41 | | 56 | | |
| Religious Studies | | | | | | 70 | |
| Science | | | 42 | | 57 | | |
| Sociology | | | | 48 | | 70 | |
| Sport | | | | | 57 | | |
| Travel & Tourism | | 29 | 42 | | | | |
| Work Skills | 25 | | | | | | |



OPEN EVENTS

Open Evening: 27 November 18

5pm–7pm

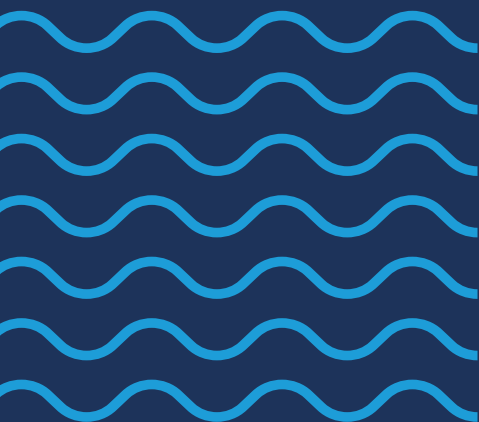
Open Evening: 29 January 19

5pm–7pm

Open Evening: 2 July 19

5pm–7pm

Sign up for an open event online
at **www.bsix.ac.uk**



Get in touch

BSix Brooke House Sixth Form College
Kenninghall Road, London E5 8BP

Freephone **0800 3892 947**

Email **info@bsix.ac.uk**

Visit **www.bsix.ac.uk**

