



A-LEVEL • GCSE • VOCATIONAL • ESOL

CONTENTS

Welcome Note	1
2019 Results	2
Mission Statement & The Study Programme	3 & 4
Entry Criteria	6
Course List	7
<i>Industry Sectors:</i>	
● Business and Technology	8
● Creative Industries	10
● Science and Health	12
● Humanities and Culture	14
Enrichment	16
Support at BSix	18
How to Apply	19
How to Find Us	20
Social Media	21

WELCOME FROM THE PRINCIPAL

In considering where to undertake the next stage of your education you probably have several schools and colleges to choose from. Let me outline the case for BSix being a particularly wise choice.

Information about specific courses and subjects is available elsewhere in the prospectus so I will confine myself to five general points.

- 1. BSix is large enough to offer a broad curriculum but sufficiently small (around 1250 students) to ensure that you would never be 'lost' in the crowd. Key staff and services are readily accessible and you should find it straightforward to make the transition from school to college.*
- 2. We will push you to achieve as well as you can whilst supplementing ambition with care. This means that attaining high grades is an important goal but that your personal tutor, teachers and support staff will also help and guide you through any setbacks you might face.*
- 3. You will be treated as a young adult and given room to grow as a person. Our aim is to help you take sizeable steps towards becoming more responsible for your own progress but we retain a number of safety nets to catch you should you fall. We preserve some of the best features of school – and do not tolerate sloppiness or lack of effort – whilst helping you to acquire the sense of independence and self-reliance which universities and employers will be impressed by.*
- 4. The college is on an upward trajectory. Over the past two and a half years exam results have markedly improved, student enrolments have increased and external bodies, including Ofsted, have praised us on our advances. We still have much to prove, however, which guarantees that, if opting to come to BSix, you would not be joining a complacent or sleepy place. Rather we would see you as a contributor to our continuing forward march.*
- 5. A good education consists not only of exam success and you would have copious opportunities to participate in various extra-curricular activities and thereby acquire new interests and competences. This should make your time here both more enjoyable and more rewarding and leave you well prepared for future challenges.*

I could go on.....but won't! Good luck with your search for the right place of study and a warm early welcome if that place is BSix.



Kevin Watson,
Principal.

RESULTS

2019/20

Level 2 Vocational Pass Rate
3% UP

Level 3 Vocational Pass Rate
100%
in 21 SUBJECTS

A-Level Pass Rate
100%
in ALL SUBJECTS

Level 3 Vocational High Grades
100%
in 5 SUBJECTS

A-Level Value Added:
Performing Within
the Top
10%
Nationally

GCSE Maths Grade 4 or Above
3% UP

GCSE English Grade 4 or Above
2% UP

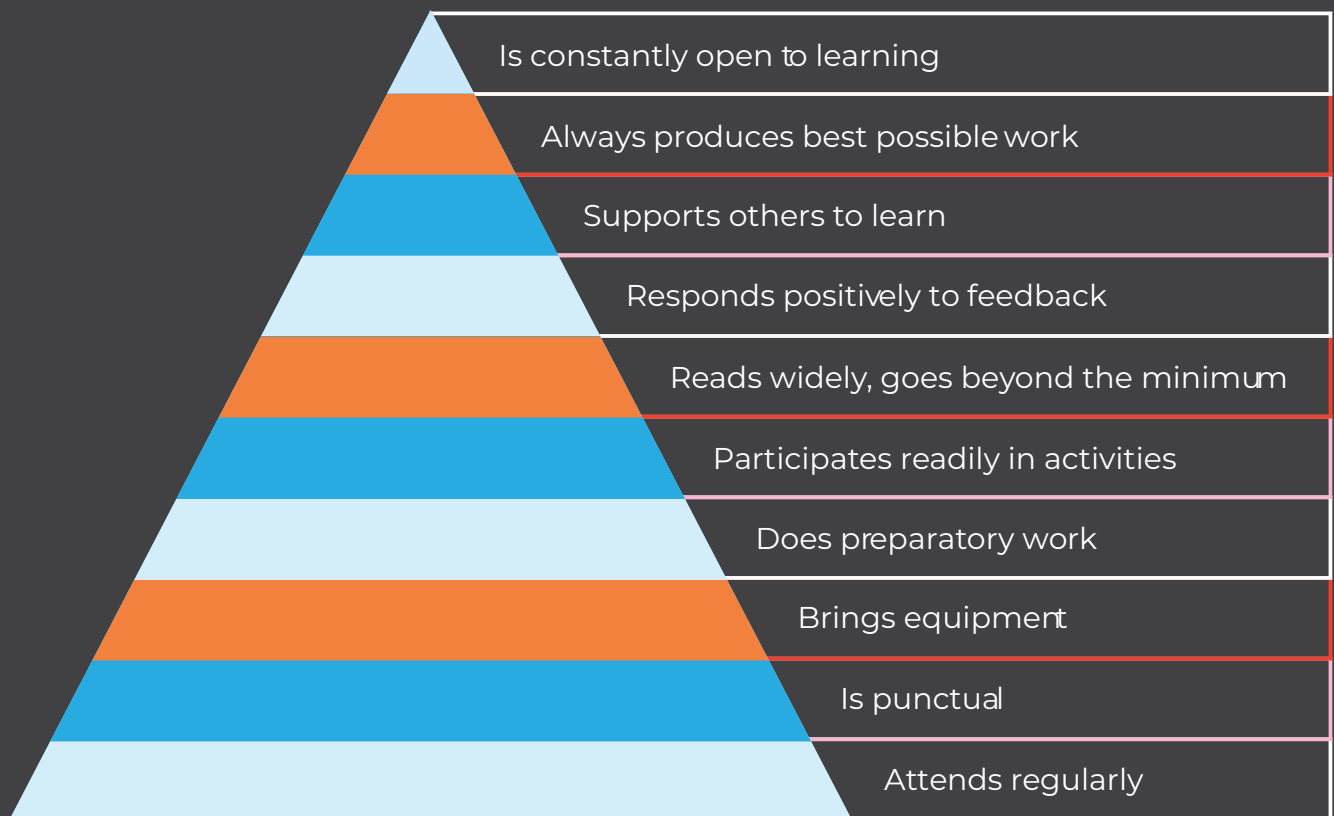
A* - B in A-Level
100%
Arabic and Turkish

MISSION STATEMENT

The mission of BSix is to develop in its students, and to demonstrate through its staff, the characteristic of being always "open to learning".

It seeks to achieve this by means of a carefully tailored and suitably challenging individual programme, underpinned by consistently strong teaching, comprehensive support services and a wide range of enrichment opportunities, set within a safe and inclusive learning environment.

THE EXPERT STAFF MEMBER... THE EXPERT STUDENT

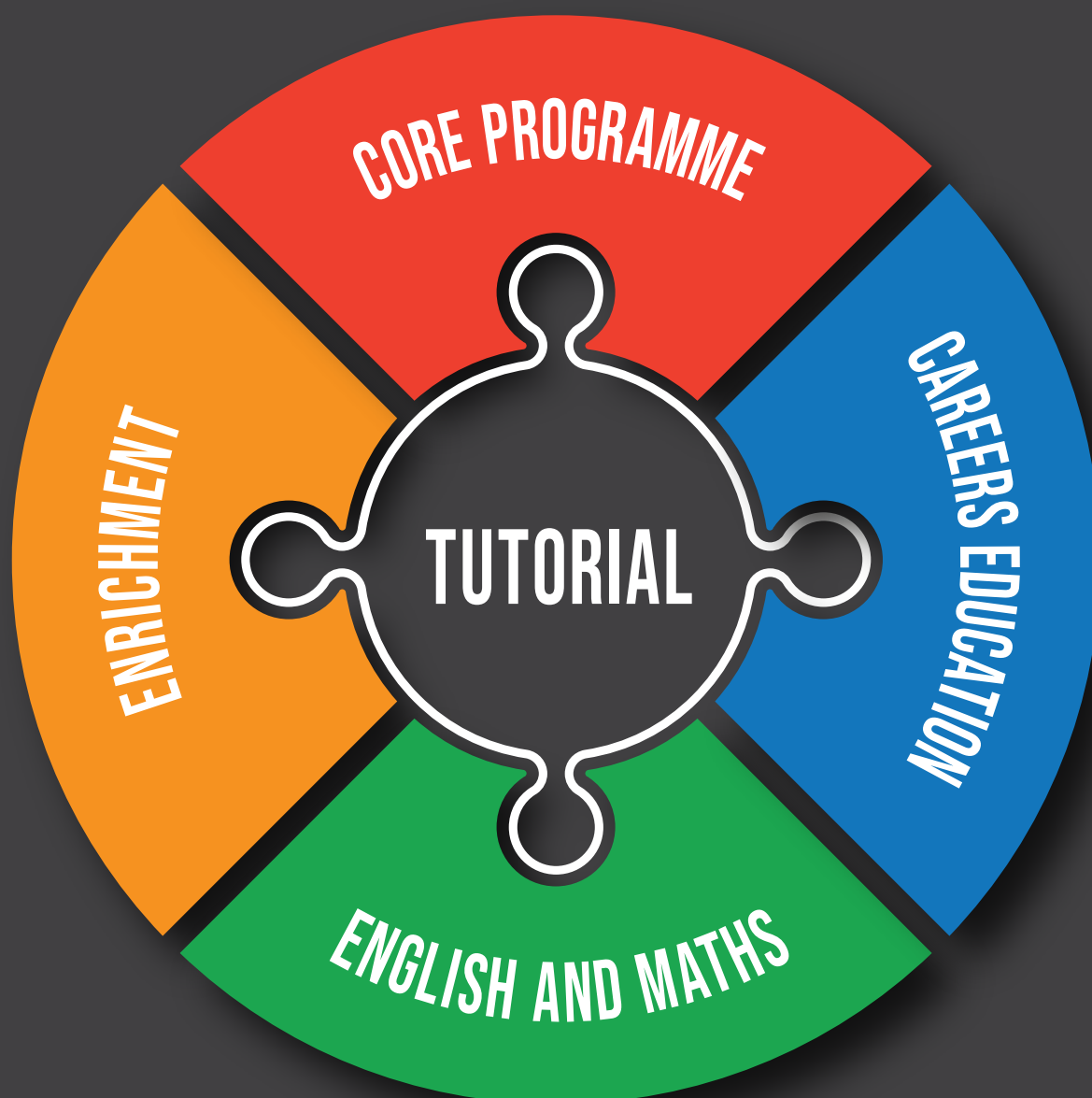


Promotion of an openness to learning is at the heart of the college ethos and is a key factor in students acquiring the qualifications, and developing the skills and personal qualities, essential for their continuing success.

STUDY PROGRAMME

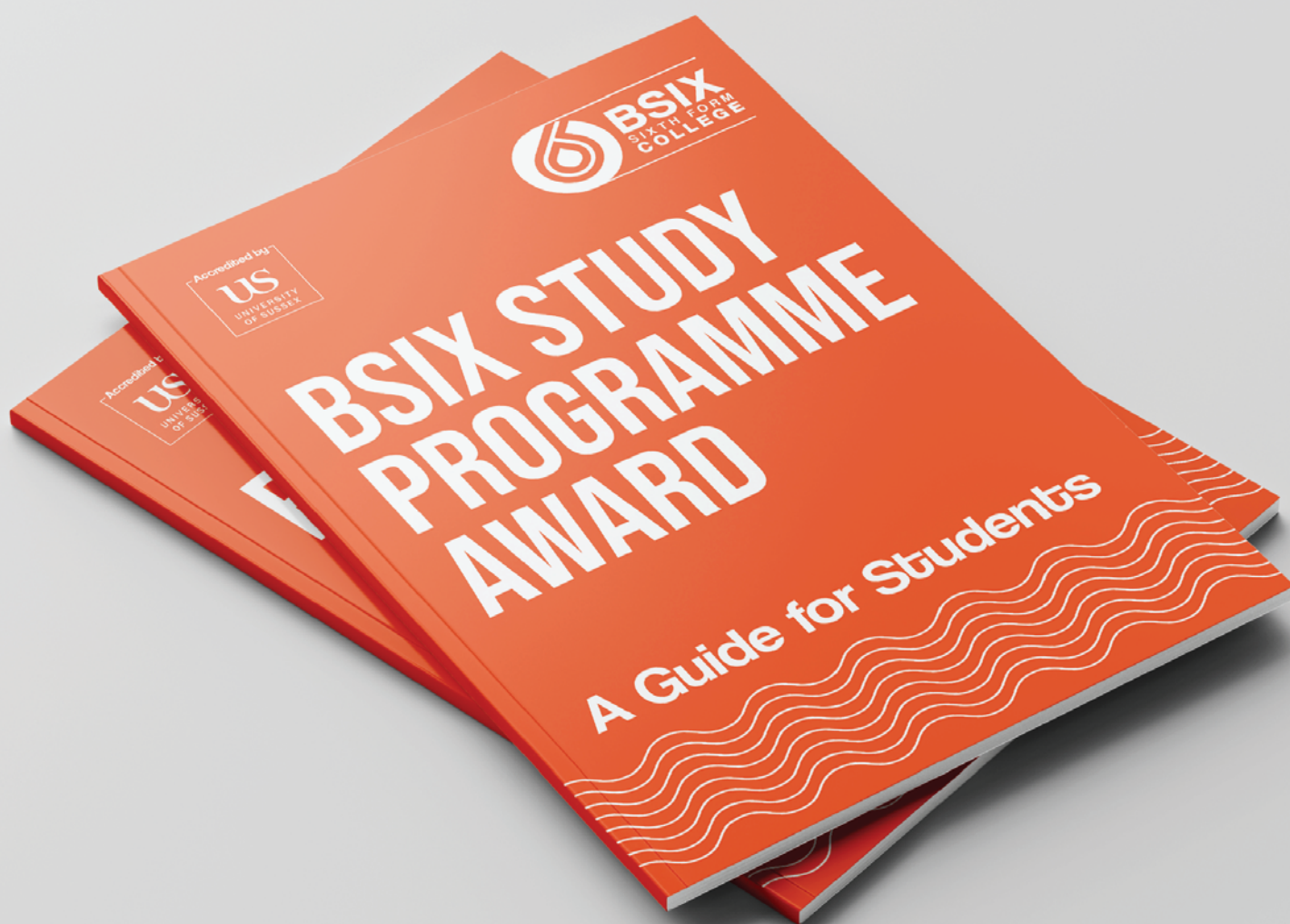
All students are enrolled onto an individually tailored Study Programme. The aim of the Study Programme is to equip you with the necessary skills to progress onto a further course of study, a university degree, an apprenticeship and ultimately into employment.

Your Study Programme will consist of:



ACCREDITATION

BSix are very proud to announce that our Study Programme Award is accredited by the *University of Sussex*



US
UNIVERSITY
OF SUSSEX

ENTRY CRITERIA

Our entry criteria will help you choose the right level and type of qualification for you:

LEVEL	DURATION	ENTRY REQUIREMENTS	PROGRESSION
ESOL & Entry Level	1 Year	No formal entry requirements required	Higher-level course having acquired sufficient skills in English and Maths
LEVEL 1	1 Year	Grade 2 profile at GCSE	Level 2 Study
LEVEL 2	1 Year	Four GCSEs at grade 3 including English or Maths	Level 3 Study
GCSE PACKAGE	1 Year	Five GCSEs at grade 3 including English and Maths	Level 3 Study
LEVEL 3 VOCATIONAL	2 Years	Five GCSEs at grade 4 including English or Maths	University, employment or an apprenticeship
A-LEVELS*	2 Years	Five GCSEs at grade 4 including English and Maths	University, employment or an apprenticeship

* Certain A-level and vocational Level 3 subjects require specific grades at GCSE, which are listed on the college website: www.bsix.ac.uk/subjects

COURSE LIST

A-Levels

Art & Design
 Business Studies
 Biology
 Chemistry
 Criminology
 Computer Science
 Economics
 English Language & Literature
 English Literature
 Environmental Science
 Film Studies
 Further Mathematics
 History
 Law (Applied)
 Mathematics
 Media Studies
 Modern Foreign Languages
 Music Production
 Photography
 Physics
 Politics
 Psychology
 Religious Studies
 Sociology



Vocational Courses *at Levels 1, 2 & 3*

Art & Design (*UAL*)
 Business (*BTEC*)
 Childcare (*CACHE*)
 Creative Media (*UAL*)
 Foundation Art (*UAL Level 4*)
 Health and Social Care (*CACHE*)
 Information Technology (*BTEC*)
 Music Performance and Production (*UAL*)
 Science (*BTEC*)
 Sport (*BTEC*)

Foundation Learning

ESOL
 Project Search – Supported Internship
 RISE – Routes Into Supported Employment

BUSINESS AND TECHNOLOGY

Related Courses:

A-levels:

Business
Computer Science
Economics
Further Maths
Politics
Law
Maths

Vocational:

Business
IT

"BSix has given me lots of support and encouragement which I never experienced before when I was in school"

Ellie-Mae Polden

A-Level Economics, A-Level Mathematics, Extended Project

FACTS

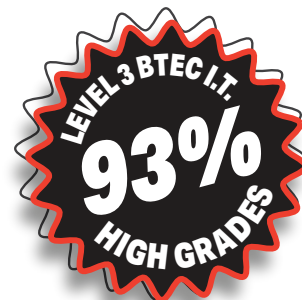
2.3 million people employed in the finance industry

£15.9bn foreign investment into the UK

63% increase in new business over the last 20 years

1.46 million people employed in the tech sector

£184bn value of the tech sector to the UK economy



CAREERS

A-Level combination ideas and Level 3 course suggestions to inspire your future career:

LAWYER - £72,000 Salary		
SUBJECT 1	SUBJECT 2	SUBJECT 3
History	English Literature	Law
Or Level 3 Business		

ECONOMIST - £52,000 Salary		
SUBJECT 1	SUBJECT 2	SUBJECT 3
Economics	Maths	Law
Or Level 3 Business		

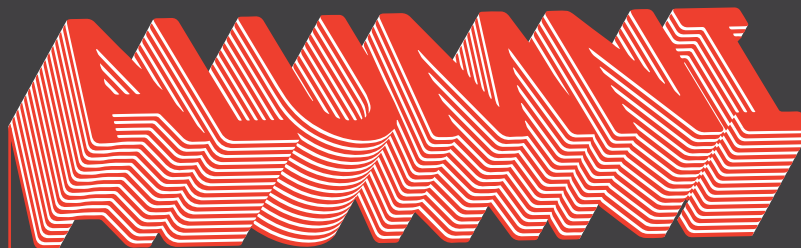
FINANCIAL MANAGEMENT - £78,000 Salary		
SUBJECT 1	SUBJECT 2	SUBJECT 3
Business	Psychology	Economics
Or Level 3 Business		

SYSTEMS ANALYST - £53,000 Salary		
SUBJECT 1	SUBJECT 2	SUBJECT 3
Computer Science	Maths	Physics
Or Level 3 Information Technology		

CYBER SECURITY - £45,000 Salary		
SUBJECT 1	SUBJECT 2	SUBJECT 3
Computer Science	Maths	Law
Or Level 3 Information Technology		

IT CONSULTANT - £67,000 Salary		
SUBJECT 1	SUBJECT 2	SUBJECT 3
Business Studies	Computer Science	Maths
Or Level 3 Information Technology		

BUSINESS AND TECHNOLOGY



T
I
N
A



Tina came to **BSix College** from Newham College and enrolled onto *ESOL*. Successfully completing her *ESOL*, Tina quickly progressed from *Level 2* onto *Level 3 Business*. Tina achieved a perfect **D* D* D*** grade in the *BTEC Level 3 Extended Diploma in Business* and has secured a place at **City University of London** to study Law.

B
R
I
G
E
N



Brigen came to **BSix College** as an overseas student and enrolled onto the *BTEC Level 3 Extended Diploma in Information Technology*. Brigen achieved an excellent **D* D* D*** grade and has secured a place at **City University of London** to study Computer Science.

CREATIVE INDUSTRIES

Related Courses:

A-levels:

Art & Design

English Language and Literature

Media Studies

Maths

Music Production

Photography

Vocational:

Art & Design

Creative Media

Music Performance
& Production

*"Learning is interactive, hands on and fun.
Staff are very understanding and helpful."*

Hope Wardley

UAL Diploma Creative Media



1 in 8 UK businesses are in the creative sector

£100bn is generated every year within the UK economy by the creative industries

3.1 million UK jobs are in the creative industries

6,500 apprenticeships are in the arts sector



CAREERS

A-Level combination ideas and Level 3 course suggestions to inspire your future career:

ARCHITECT

- £47,000 Salary

SUBJECT 1

Art
&
Design

SUBJECT 2

Maths

SUBJECT 3

Physics

Or Level 3 Art & Design

WEB DEVELOPER

- £32,000 Salary

SUBJECT 1

Computer
Science

SUBJECT 2

Media Studies

SUBJECT 3

Photography

Or Level 3 Creative Media

JOURNALIST

- £33,000 Salary

SUBJECT 1

Photography

SUBJECT 2

Media Studies

SUBJECT 3

English
Language &
Literature

Or Level 3 Creative Media

GRAPHIC DESIGNER

- £33,000 Salary

SUBJECT 1

Art
&
Design

SUBJECT 2

Maths

SUBJECT 3

Photography

Or Level 3 Art & Design

MUSICIAN

- £43,000 Salary

SUBJECT 1

Music
Production

SUBJECT 2

Maths

SUBJECT 3

English
Language &
Literature

Or Level 3 Music Performance & Production

ARTS MANAGEMENT

- £43,000 Salary

SUBJECT 1

Business
Studies

SUBJECT 2

Art
&
Design

SUBJECT 3

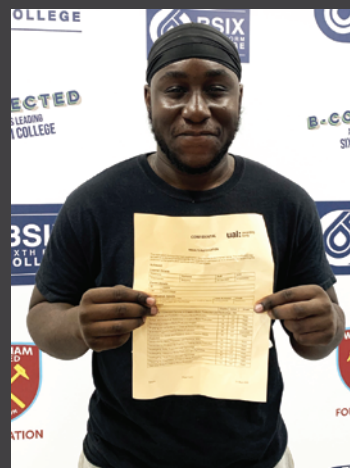
Music
Production

Or Level 3 Music Performance & Production

CREATIVE INDUSTRIES



OCEANWAVES



Oceanwaves came to **BSix College** from Bishop Challoner School and enrolled onto *Level 2 Media*. After achieving a **Distinction** grade at *Level 2*, Oceanwaves progressed onto the *UAL Level 3 Extended Diploma in Creative Media* and achieved a **Distinction**. Oceanwaves has secured his place at **Birmingham University** to study Journalism.

GEORGE



George came to **BSix College** from Stormont House School on a transition project placing students with an Education, Health and Care Plan (EHCP) onto post-16 study programmes. George accelerated beyond *Level 2* and achieved a **Distinction** grade at *Level 3* in the *UAL Extended Diploma Art & Design*. George is now completing the *Level 4 Foundation Art & Design* programme at **BSix College**. He is a determined and hard working student who has set a fine example of progression for other students.

SCIENCE AND HEALTH

Related Courses:

A-levels:

Biology

Chemistry

Environmental Science

Physics

Maths

Psychology

Vocational:

Applied Science

Health & Social Care

Sports

"My teacher helped build up my confidence so now I believe I can get the grades I want to achieve"

Aiyela-May Dwyer

A-Level Psychology, A-Level Sociology, Extended Project

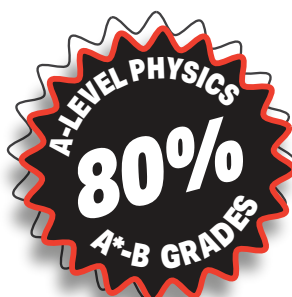
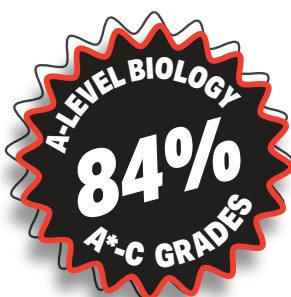
FACTS

1.4 million people employed by the NHS

£8.7 trillion to be invested in science & technology sector

142,000 new jobs in science, research and engineering from now until 2023

19% of the science and engineering sector are female



CAREERS

A-Level combination ideas and Level 3 course suggestions to inspire your future career:

PHYSIOTHERAPIST - £32,000 Salary		
SUBJECT 1	SUBJECT 2	SUBJECT 3
Biology	Maths	Psychology
Or Level 3 Sports		

MEDIC - £65,000 Salary		
SUBJECT 1	SUBJECT 2	SUBJECT 3
Biology	Chemistry	Maths
Or Level 3 Applied Science		

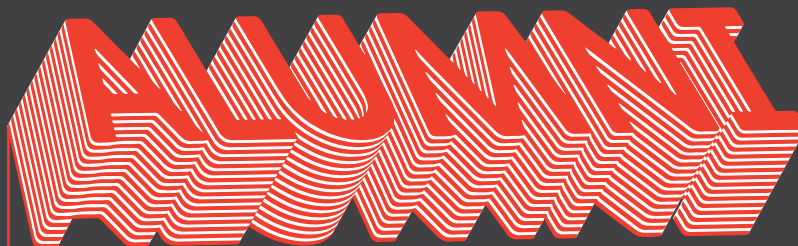
ASTROPHYSICIST - £49,000 Salary		
SUBJECT 1	SUBJECT 2	SUBJECT 3
Physics	Maths	Further Maths
Or Level 3 Applied Science		

HEALTH PROFESSIONAL - £32,000 Salary		
SUBJECT 1	SUBJECT 2	SUBJECT 3
Sociology	Biology	Psychology
Or Level 3 Health & Social Care		

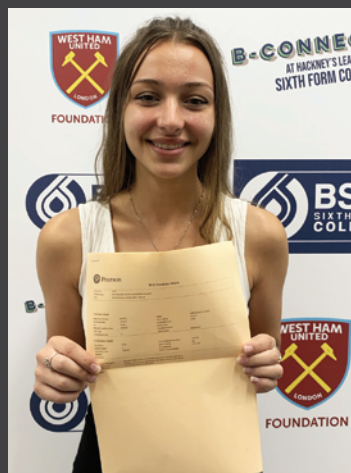
ENVIRONMENTAL SERVICE MANAGEMENT - £32,000 Salary		
SUBJECT 1	SUBJECT 2	SUBJECT 3
Biology	Environmental Science	Psychology
Or Level 3 Applied Science		

NURSING - £34,000 Salary		
SUBJECT 1	SUBJECT 2	SUBJECT 3
Biology	Chemistry	Psychology
Or Level 3 Health & Social Care		

SCIENCE AND HEALTH



ERIN



Erin came to **BSix College** from the Connaught School for Girls. Erin studied the **BTEC Level 3 Extended Diploma in Health and Social Care** and achieved an outstanding **D* D* D*!**

Erin has secured a place at **London Southbank University** to study Adult Nursing.

B
I
A
N
C
A



Bianca came to **BSix College** from New Regents Pupil Referral Unit. Bianca started her journey studying **ESOL** before quickly progressing onto **Level 2 Childcare**. Bianca then progressed onto the **Level 3 Technical CACHE Diploma in Childcare & Education** programme which provided her with substantial industry work placement. Bianca worked in four different childcare industry settings covering a range of age groups and one specialist placement for children with special needs. Bianca achieved a B grade in her qualification. Bianca has now secured a university place at **UEL** studying **Psychotherapy & Practice**.

HUMANITIES AND CULTURE

Related Courses:

A-levels:

English Language & Literature
English Literature
Film Studies
History
Modern Foreign Languages
Politics
Psychology
Religious Studies
Sociology

Vocational:

Childcare & Education
Business

"Extra classes in Maths helped me a lot and gave me more confidence.

Now I feel able to do the work where before I felt doubtful."

Monet Robinson-Miller

A-Level Politics, A-Level Mathematics, A-Level Sociology

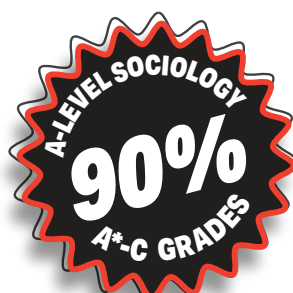
FACTS

£66 million is to be pledged to be invested into the Early Years sector

300 languages spoken in London

15% growth in Sociology sector up to 2022

24% of national parliamentarians are female



CAREERS

A-Level combination ideas and Level 3 course suggestions to inspire your future career:

TEACHER £35,000 Salary

SUBJECT 1	SUBJECT 2	SUBJECT 3
Psychology	Religious Studies	English Literature
Or Level 3 Childcare & Education		

POLITICAL ADVISOR £33,000 Salary

SUBJECT 1	SUBJECT 2	SUBJECT 3
Politics	History	English Language & Literature
Or Level 3 Business		

SENIOR CIVIL SERVANT £81,000 Salary

SUBJECT 1	SUBJECT 2	SUBJECT 3
History	Sociology	Law
Or Level 3 Business		

AID WORKER £43,000 Salary

SUBJECT 1	SUBJECT 2	SUBJECT 3
Spanish	Sociology	English Language & Literature
Or Level 3 Health & Social Care		

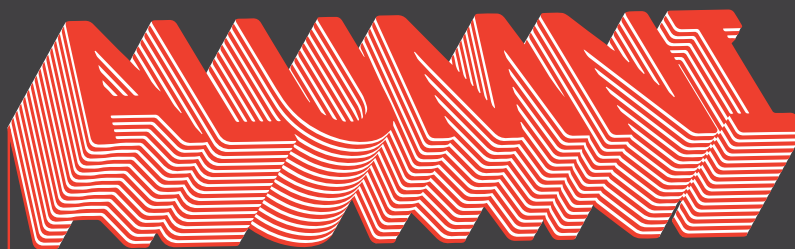
ARCHIVIST £23,000 Salary

SUBJECT 1	SUBJECT 2	SUBJECT 3
History	Sociology	English Language & Literature
Or Level 3 Business		

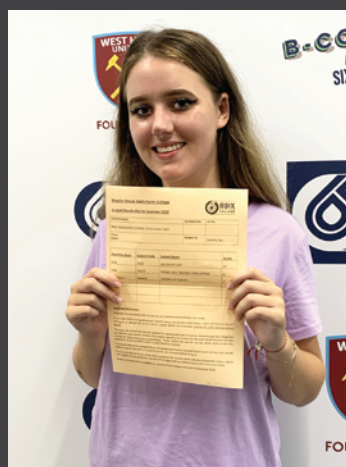
WRITER £32,000 Salary

SUBJECT 1	SUBJECT 2	SUBJECT 3
Film Studies	History	English Literature
Or Level 3 CREATIVE MEDIA		

HUMANITIES AND CULTURE



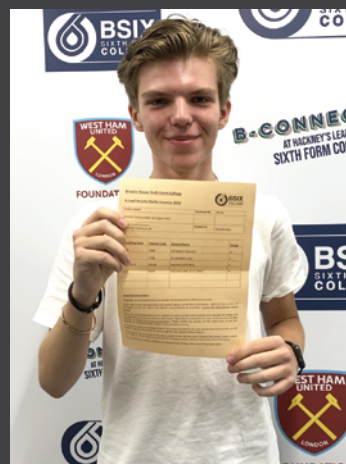
M
I
A



From Pupil Referral Unit to **Oxford University!**

Mia came to **BSix College** from Haringey Pupil Support Centre and retook her GCSEs. After completing her GCSEs, she continued her studies at **BSix** taking *A-Levels in French, History and Sociology*. Mia achieved grades **A* A A** in her *A-levels* and secured her place at **Oxford University** to study History.

A
R
I
D
A
S



Airidas came to **BSix College** from Caterham High School studied *A-levels in Economics, Politics and English Language and Literature*. Airidas achieved grades **A A B** and secured a place at **Manchester University** to study Economics and Finance.

ENRICHMENT

We believe that every student should have the opportunity to pursue their talent in order to develop their personal character. Enrichment is a key part of your study programme, which will provide you with the skills and techniques designed to increase your confidence and wellbeing whilst at the college.

There are three categories of enrichment that you can choose:

- **Academic and Creative;**
- **Outdoor Pursuits and Volunteering;**
- **Competitive Sports and Fitness Exercise**

"Duke of Edinburgh activities have taught me that hard work you will get you results. These skills are transferable to my core study in Art & Design. Careers advice has been great. I have been given the right tools to make informed choices on my career goal".

Daniel Guillermo Herrera Castillo
UAL Diploma Art and Design

AWARD WINNING KNOWLEDGE IS POWER

The Knowledge is Power programme is a parallel curriculum of events, workshops and short courses to discuss some of the major issues facing society and young people today. It is a place for students to share experiences of the world, to make greater sense of those experiences, and to build Knowledge and Power upon them from visiting speakers.

BSix are proud to announce that our '**Knowledge is Power**' programme has been commended for its excellence, innovation and best practice by the **Association of Colleges** and is a finalist through its **Beacon Awards**.



SPORTS ACADEMY

BSix offers talented students the opportunity to play elite men's and women's college football competing in the AOC Sport league against the very best London has to offer.

The football team selects 25 players each year who have the potential to achieve excellence while pursuing their own careers in football.

The academy offers elite coaching 2 times a week with Level 2 and UEFA B coaches and regular match fixtures. Members also have the opportunity to gain an introduction to first aid and safeguarding, and Level 1 & 2 Football qualifications.

As a key partner, we have strong links to West Ham United football foundation which will give opportunities for players deemed strong enough to be placed on the foundation teams.

SEE WWW.BSIX.AC.UK/ENRICHMENT FOR INFORMATION ON ALL PROGRAMMES



SUPPORT AT BSIX

FINANCE



You can apply for financial support to help with the costs of college. Priority is given to young people in care, care leavers, young people on income support and disabled young people receiving employment support allowance or disability allowance. Free meals are provided to students that meet eligibility criteria and provide evidence of household income.

TUTORING



Every student is allocated a personal tutor who will meet with you weekly to provide guidance and support. Your tutor will monitor all aspects of your study programme and will help you to set targets to ensure you are successful. Your tutor will provide your reference and help you to apply for university, further training and jobs.

LEARNING SUPPORT



Our inclusive learning support has had a major impact on students' achievements. We are committed to providing an accessible learning environment which enables all students to be included in college life. We welcome students with learning difficulties and disabilities.

SAFEGUARDING & WELFARE



We are committed to safeguarding and promoting the welfare of our students. All students should be kept safe from harm, including any form of abuse, sexual exploitation or radicalisation. We protect our students from extremists who advocate violence, religious hatred, or racist, sexist or homophobic views. Our safeguarding officers also help with personal issues such as homelessness or health. If there is something an adviser cannot help you with, they will refer you to an external agency to get the practical support you need.

LGBTQ+ SUPPORT



We work hard to make sure that LGBTQ+ people feel safe, welcomed and supported by providing a safe space for students to study and work. We promote LGBTQ+ awareness through a wide range of events and student activities.

HOW TO APPLY

APPLY ONLINE:

You can apply online by going to our website:
www.bsix.ac.uk

You will also need to request a reference from your school. You can download a reference form from the '**Apply**' page of our website and we will also send you a copy when we invite you to your interview.

APPLY TODAY

Don't leave it too late as we run a number of popular courses. If you need any advice about applying to study at BSix Sixth Form College, please contact Admissions on:
Freephone **0203 137 5320**
or email **info@bsix.ac.uk**

Note: If you have any additional support needs e.g. dyslexia or extra time in exams, please make sure you tell us on your application form and at interview so we can ensure you receive appropriate help.



CONTACT US

BSix Sixth Form College
Kenninghall Road
London E5 8BP

Email us: info@bsix.ac.uk

For all other enquiries please call: **0203 137 5320**

How to find us:

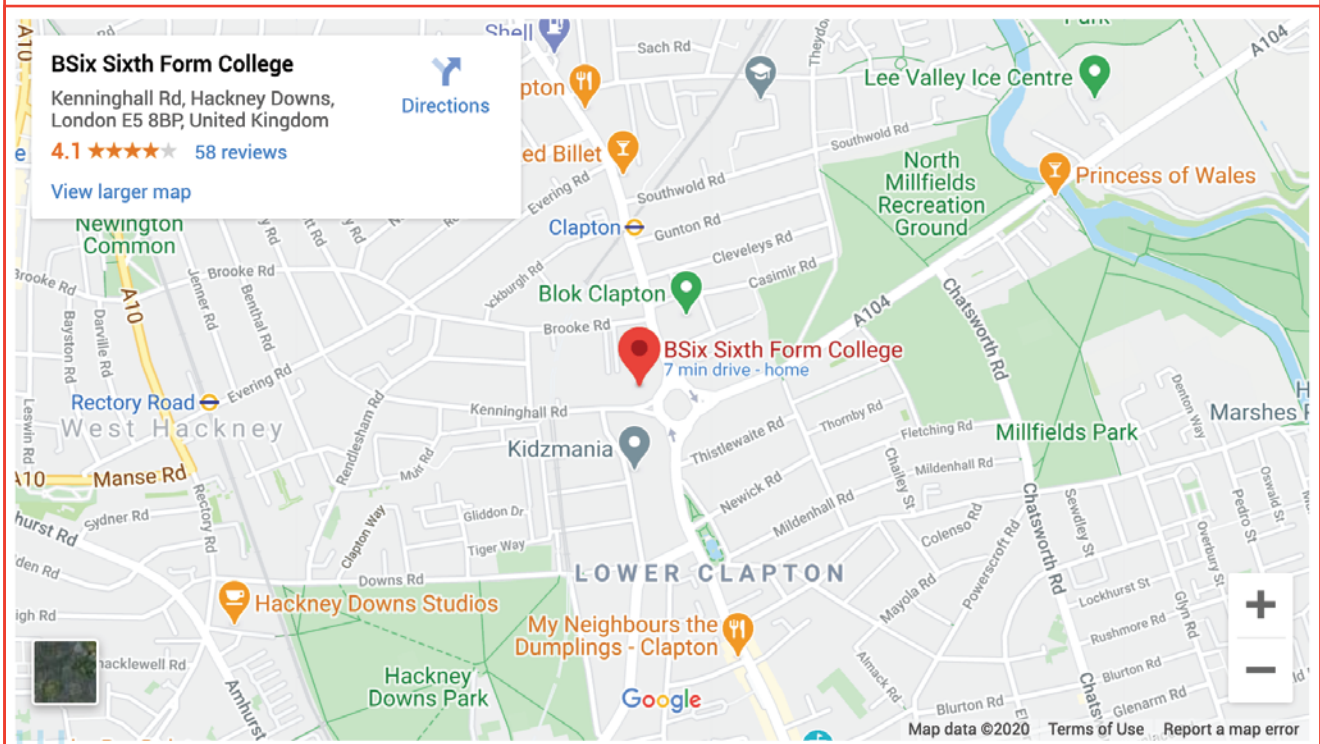
Local bus routes: 38, 48, 55, 56, 106, 253, 254, 393, 425, 488

Nearest Overground Stations:

Clapton, Hackney Downs and Rectory Road (5 minutes away)

Hackney Central (10 minutes away)

Dalston Junction and Dalston Kingsland Overground station is a bus ride away
 (488 or 56 bus takes 10-15 minutes)



FOLLOW US ON SOCIAL MEDIA

Keep up to date and join in with all the current events, happenings and student work at BSix across all of our social media platforms:



SNAPCHAT: *@BSixcollege*



INSTAGRAM: *@bsixcollege*



TWITTER: *@bsixcollege*



FACEBOOK: *facebook.com/BSixCollege*



TIKTOK: *@b6college*



YOUTUBE: *BSix Sixth Form College*

APPENDIX